



St. Lukes Road, W11

£600 Per week

A bright and recently refurbished top-floor flat offers two spacious bedrooms, a modern open-plan living area, and a stylish kitchen with high-spec appliances. The property is situated in a well maintained Victorian conversion. Located just off Westbourne Park Road, it's a short walk to Portobello Road, vibrant cafés, and boutiques.

Located just off Westbourne Park Road with easy access to Portobello Road and the local cafes, boutiques and restaurants around Westbourne Grove and Notting Hill.

Features

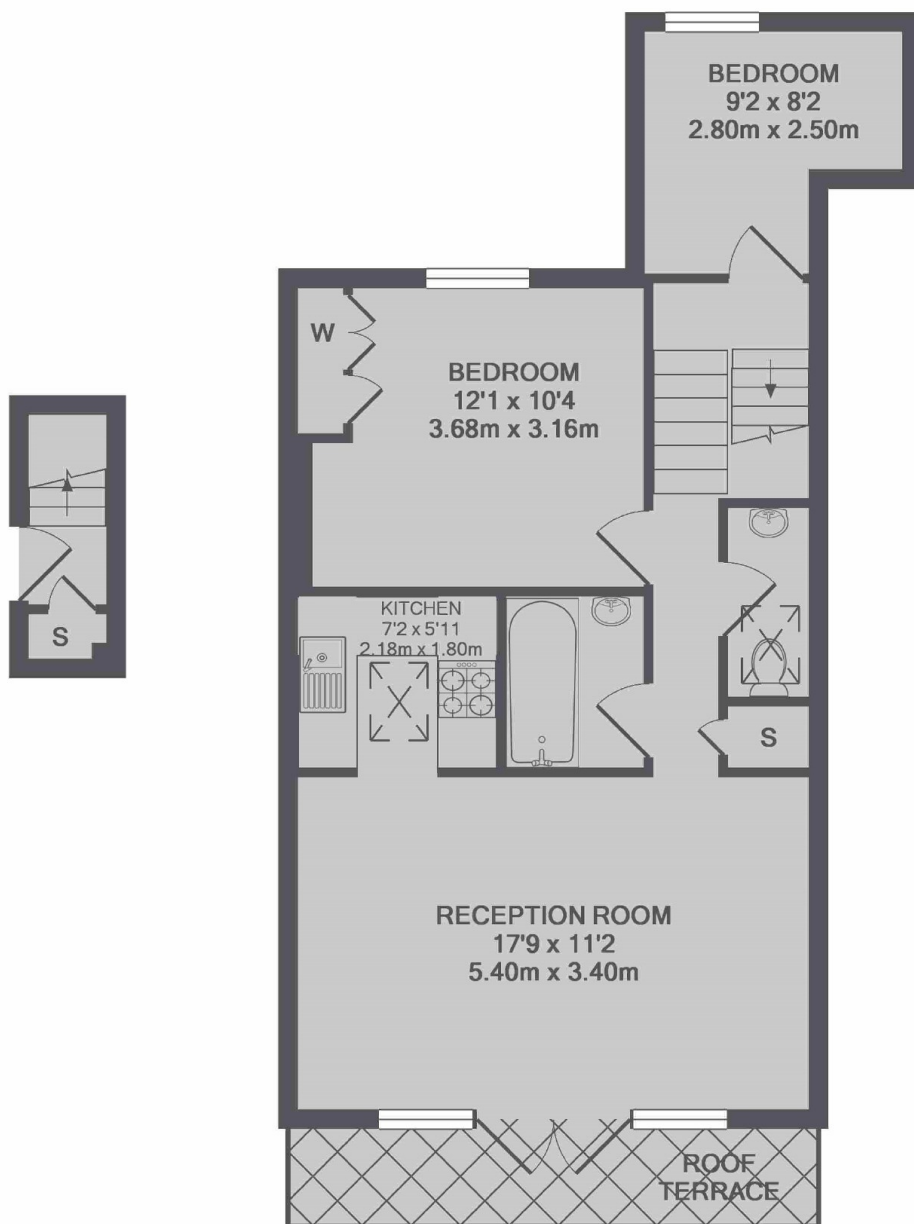
- Two Bedrooms
- Third Floor
- Wood Floors
- Open Plan Kitchen
- Bathroom With Shower
- Private Terrace



St. Lukes Road, W11



St. Lukes Road, London, W11



TOTAL APPROX. FLOOR AREA 595 SQ.FT. (55.3 SQ.M.)

Dexters

Notting Hill
121-123 Notting Hill Gate
London
W11 3LB
Lettings
020 7792 0792

Energy Rating: C. We aim to make our particulars both accurate and reliable. However they are not guaranteed; nor do they form part of an offer or contract. If you require clarification on any points then please contact us, especially if you're traveling some distance to view. Please note that appliances and heating systems have not been tested and therefore no warranties can be given as to their good working order.

 **RICS** | Regulated
Estate Agent
and Letting Agent

[dexters.co.uk](https://www.dexters.co.uk)