



Lansdowne Walk, W11

£692 Per week

Dexters



Lansdowne Walk, W11

This beautiful fourth-floor apartment, accessible via lift, is flooded with natural light thanks to its floor-to-ceiling windows, offering breathtaking views. Recently refurbished, the property features two double bedrooms, a generous open-plan living and kitchen area, modern bathroom and plenty of storage space. In excellent condition, it combines style with practicality.

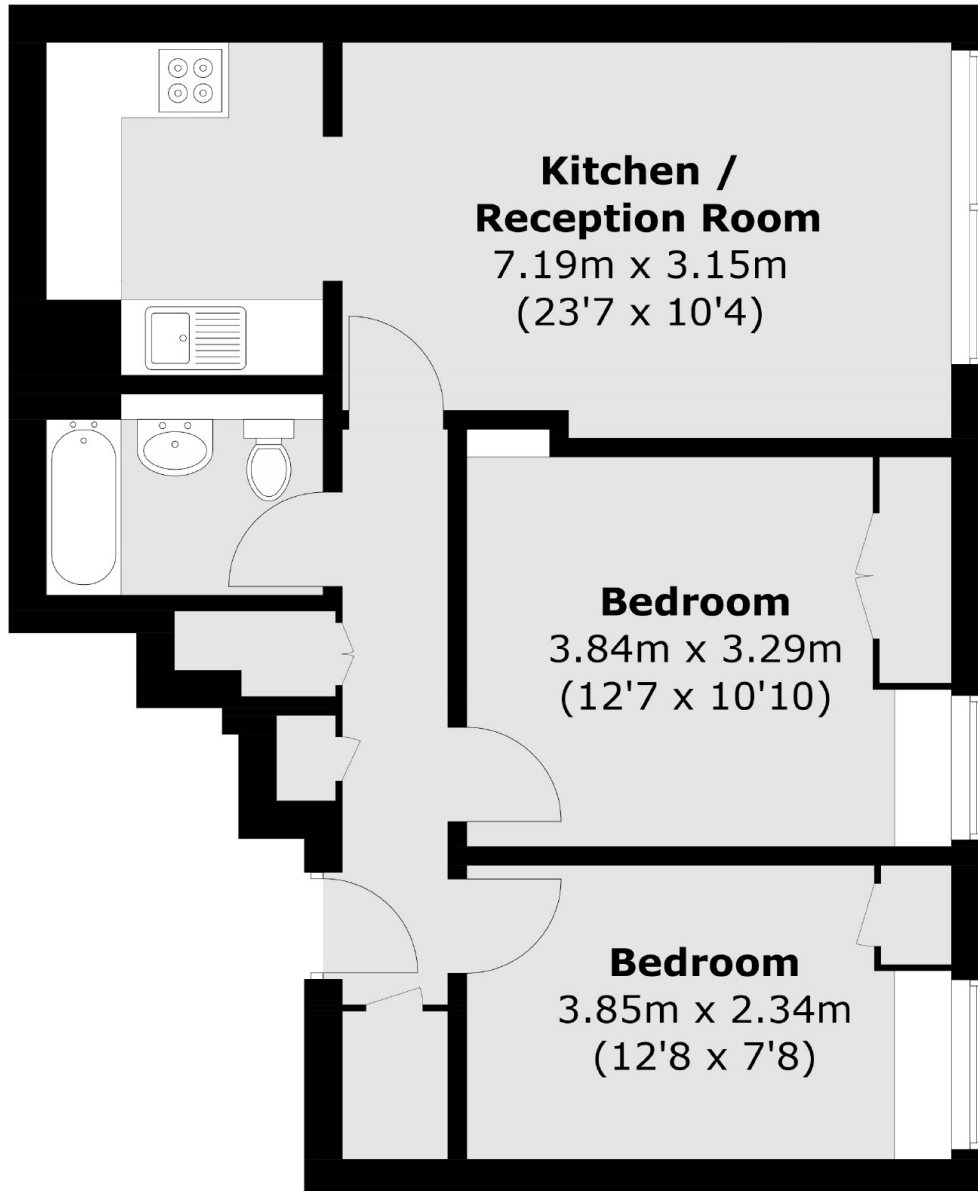
Bartok House is situated on Lansdowne Walk and offers access to lovely communal gardens. Holland Park tube station (Central Line) is just a 0.2 mile walk away and the apartment is ideally located to the shops and amenities of Holland Park Avenue.

Features

- Two Double Bedrooms
- Lift Access
- Recently Refurbished
- Communal Gardens
- 0.2 miles to Holland Park Station



Lansdowne Walk, London, W11



Total area (approx.): 54.9 sq. m (590.9 sq. ft)

Dexters

Notting Hill
121-123 Notting Hill Gate
London
W11 3LB
Lettings
020 7792 0792

Energy Rating: . We aim to make our particulars both accurate and reliable. However they are not guaranteed; nor do they form part of an offer or contract. If you require clarification on any points then please contact us, especially if you're traveling some distance to view. Please note that appliances and heating systems have not been tested and therefore no warranties can be given as to their good working order.

 **RICS** | Regulated
Estate Agent
and Letting Agent

[dexters.co.uk](https://www.dexters.co.uk)