



Brewster Gardens, W10

£1,026 Per week

A newly refurbished and architecturally designed three bedroom penthouse with two bathrooms, parquet flooring, balcony and perfectly positioned in close proximity to the park.

The property is ideally located in North Kensington within a close proximity to all the shops, bars and restaurants of Notting Hill and White City. Laitmer Road tube station is a short moments walk away.

Features

- 3 Bedroom
- Two Bathroom
- Brand Newly Refurbished
- Furnished/Unfurnished
- Balcony

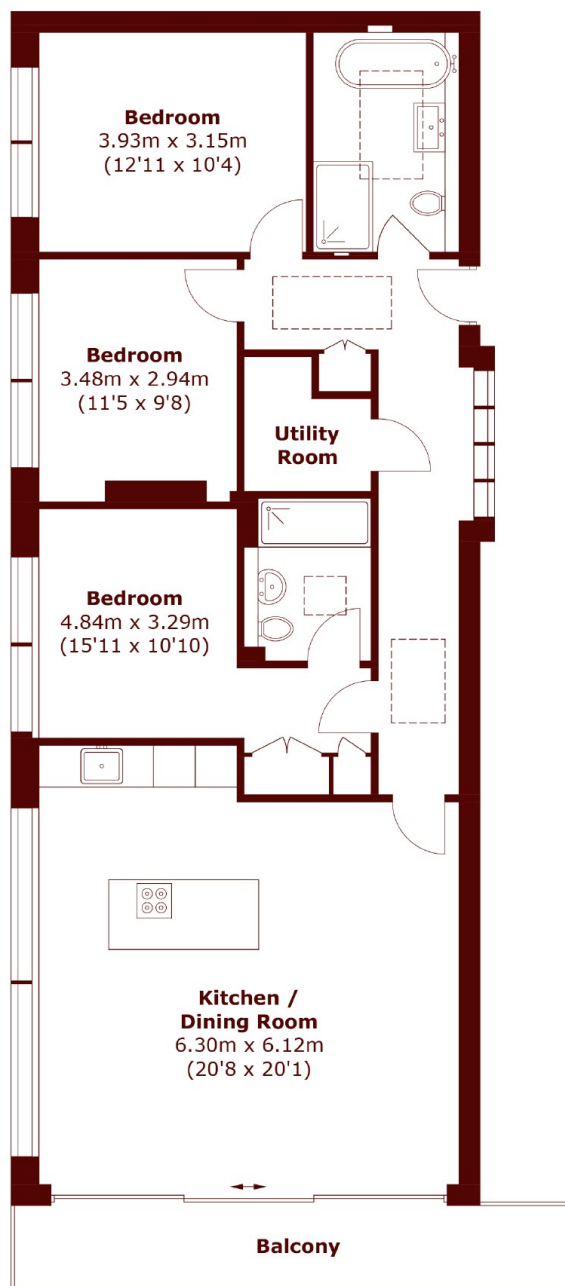


Brewster Gardens, W10

This property has been finished to an exceptional standard throughout, with an array of modern features including large windows, open plan kitchen and spacious balcony.



Brewster Gardens, London, W10



Fourth Floor

Total area (approx.): 102.5 sq. m (1,103.3 sq. ft)
Balcony: 9.6 sq. m (103.3 sq. ft)