



## Artesian Road, W2

**£669** Per week

A bright and spacious apartment situated on the second floor of this highly sought-after block with porterage, lift access and communal gardens.

Comprises of a large reception room with dining area and wood flooring throughout, fully fitted kitchen, two double bedrooms with ample storage and family bathroom.

Situated in the heart of Notting Hill, close to Portobello Road Market and within walking distance to Kensington Gardens.

### Features

- Two Double Bedrooms
- Wooden Flooring
- Built in Storage
- Lift Access
- Portered Development
- Separate Kitchen

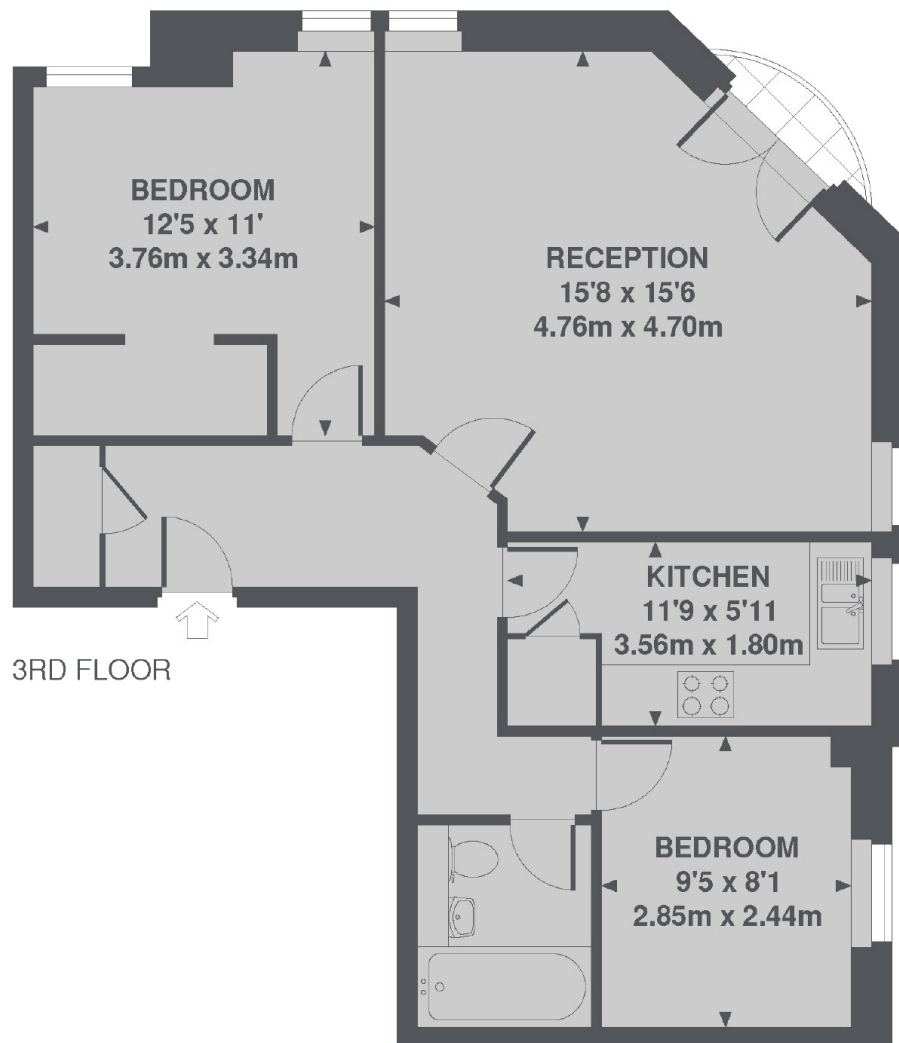


**Artesian Road, W2**





# Artesian Road, London, W2



TOTAL APPROX. FLOOR AREA 631 SQ. FT. (58.6 SQ. M.)