



Westbourne Grove, W11

£1,153 Per week

A well presented three bedroom maisonette with a private roof terrace located on the popular Westbourne Grove. Offering a private entrance and a modern finish throughout.

Ideally located on the popular street with access to all shops and restaurants in Notting Hill, including Electric brasserie, The Ledbury and Granger and Co. The closest underground station is Notting Hill.

Features

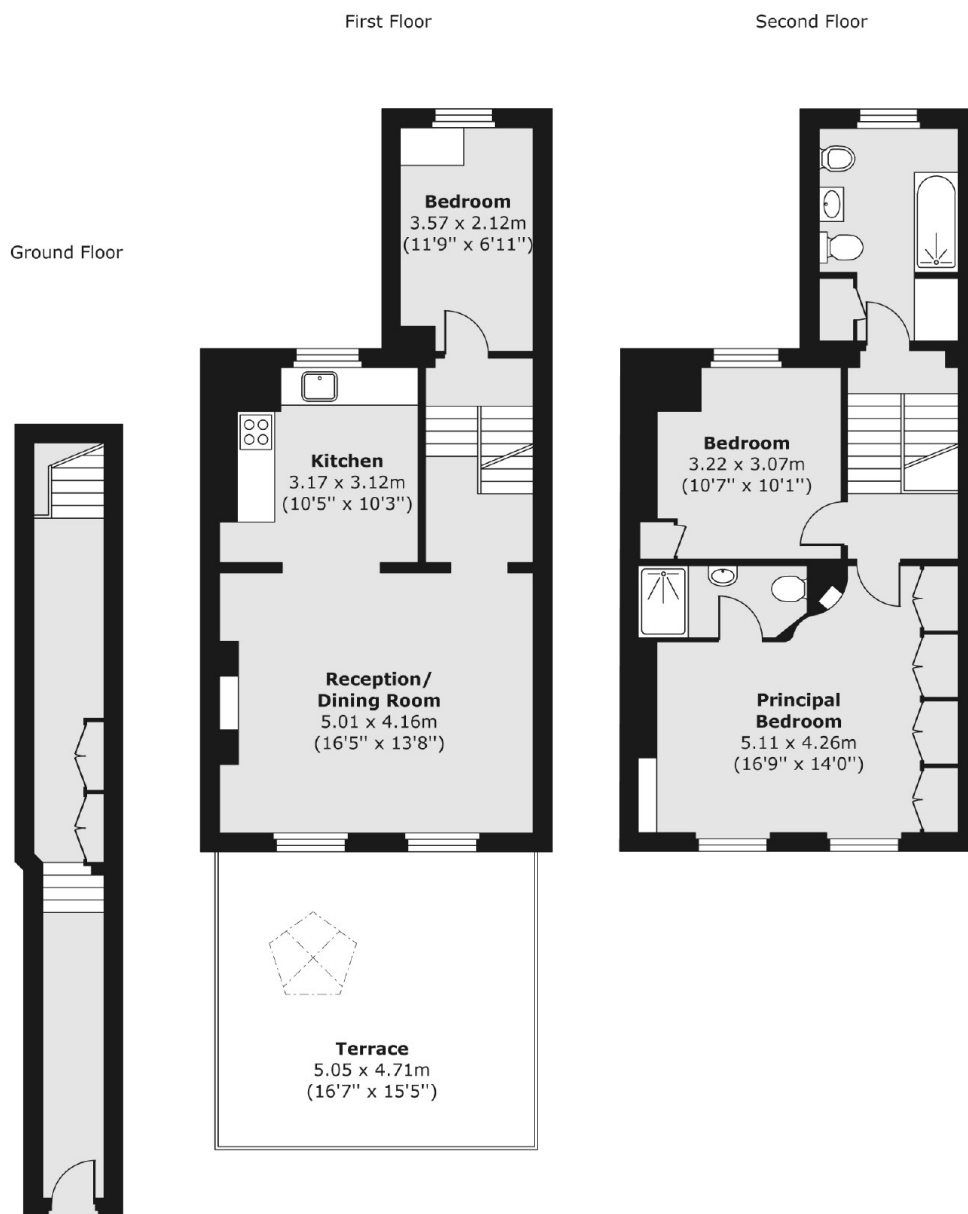
- Three Bedrooms
- Split-level
- Roof Terrace
- Professionally Managed
- Semi-open Plan
- Private entrance
- Westbourne Grove
- Prime Notting Hill Location



Westbourne Grove, W11



Westbourne Grove, London, W11



Total area (approx.) 101.93 sq. m (1,097 sq. ft)

Terrace area (approx.) 23.79 sq. m (256 sq. ft)

Dexters

Notting Hill
121-123 Notting Hill Gate
London
W11 3LB
Lettings
020 7792 0792

Energy Rating: . We aim to make our particulars both accurate and reliable. However they are not guaranteed; nor do they form part of an offer or contract. If you require clarification on any points then please contact us, especially if you're traveling some distance to view. Please note that appliances and heating systems have not been tested and therefore no warranties can be given as to their good working order.

RICS Regulated
Estate Agent
and Letting Agent

dexters.co.uk