



Holland Park, W11

£3,000 Per week

Dexters



Holland Park, W11

A meticulously refurbished and architecturally designed three bedroom apartment with two bathrooms, high ceilings and original period features perfectly positioned in prime Holland Park.

The property is ideally located on Holland Park within a close proximity to all the shops, bars and restaurants of Notting Hill Gate, Holland Park and High Street Kensington. Holland Park tube station is a short moments walk away.

Features

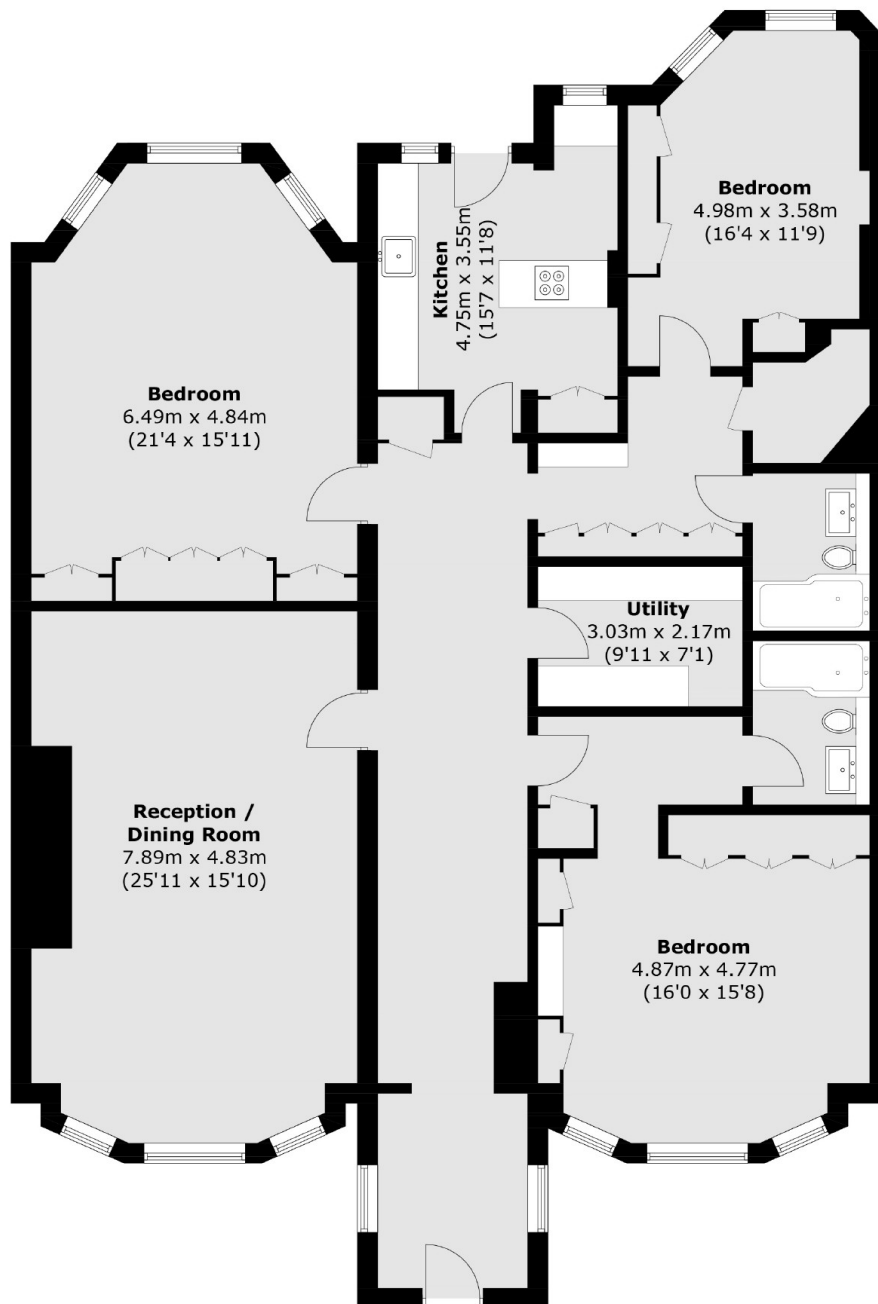
- Architecturally Designed
- High Ceilings
- Original Period Features
- Two Luxury Bathrooms
- Generous Natural Light
- Prime Holland Park







Holland Park, London, W11



Total area (approx.): 186.1 sq. m (2,003.2 sq. ft)

Dexters

Notting Hill
121-123 Notting Hill Gate
London
W11 3LB
Lettings
020 7792 0792

Energy Rating: . We aim to make our particulars both accurate and reliable. However they are not guaranteed; nor do they form part of an offer or contract. If you require clarification on any points then please contact us, especially if you're traveling some distance to view. Please note that appliances and heating systems have not been tested and therefore no warranties can be given as to their good working order.

 **RICS** | Regulated
Estate Agent
and Letting Agent

[dexters.co.uk](https://www.dexters.co.uk)