



Scampston Mews, W10

£750 Per week

Dexters



Scampston Mews, W10

Charming 3-Bedroom Mews House in Scampston Mews. Located on the peaceful and highly sought-after Scampston Mews, this beautifully presented three-bedroom house offers contemporary living in the heart of Ladbroke Grove.

Nestled in the quiet and picturesque Scampston Mews, this delightful 2-bedroom, 2-bathroom house offers a perfect blend of modern living and classic London charm. Set in a highly sought-after location, this home is ideal for those seeking privacy and comfort in a vibrant neighbourhood. Spread across two floors, the property boasts a spacious and inviting open-plan living area with large windows, allowing for an abundance of natural light. The modern kitchen is fully equipped with integrated appliances, perfect for entertaining or relaxed evenings at home. Upstairs, you'll find two generously sized double bedrooms, each with ample storage space. The master bedroom benefits from an en-suite bathroom, while the second bedroom has access to a sleek and contemporary family bathroom. This mews house also offers a rare sense of tranquillity, with the added convenience of being moments away from excellent transport links and the amenities of nearby areas such as Notting Hill and Ladbroke Grove.

Features

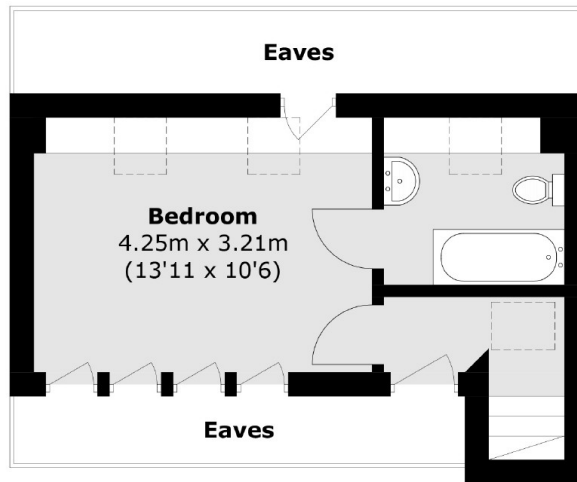
- 2 Good Sized Rooms
- Lovely Mews Development
- Available Now
- In Good Condition
- Close to the Amenities of Ladbroke Grove



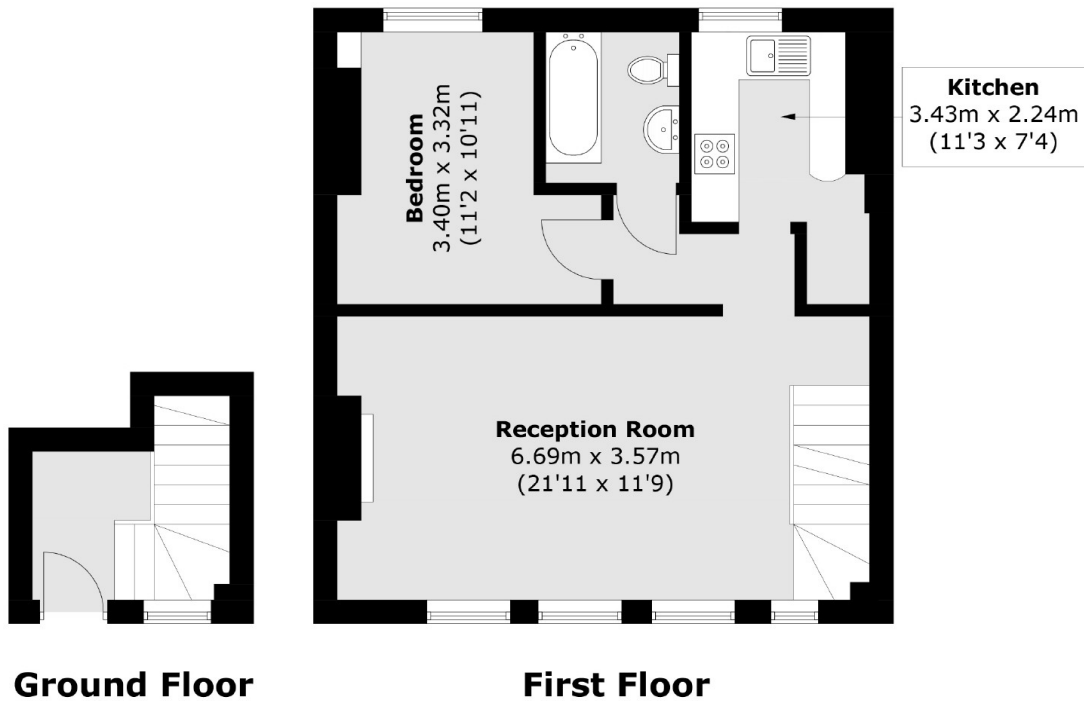




Scampston Mews, London, W10



Second Floor



Ground Floor

First Floor

Total area (approx.): 76.3 sq. m (821.2 sq. ft)
(Excluding Eaves)