



## Pembridge Villas, W2

£750 Per week

This impressive one double bedroom apartment offering vast living space and wooden floors is positioned on the 4th floor (lift access) of the sought-after Viscount Court, located in the heart of Notting Hill.

Situated moments from the vibrant amenities of Notting Hill and Holland Park, with excellent transport links nearby, this flat is perfect for anyone looking to enjoy the best of West London living.

### Features

- Prime Location
- Iconic View
- Spacious Living Space
- Fourth Floor
- Lift Access
- Wooden Floors
- Close to the cafe & restaurants of Westbourne Grove
- 809 Square Feet
- Close to Notting Hill Tube

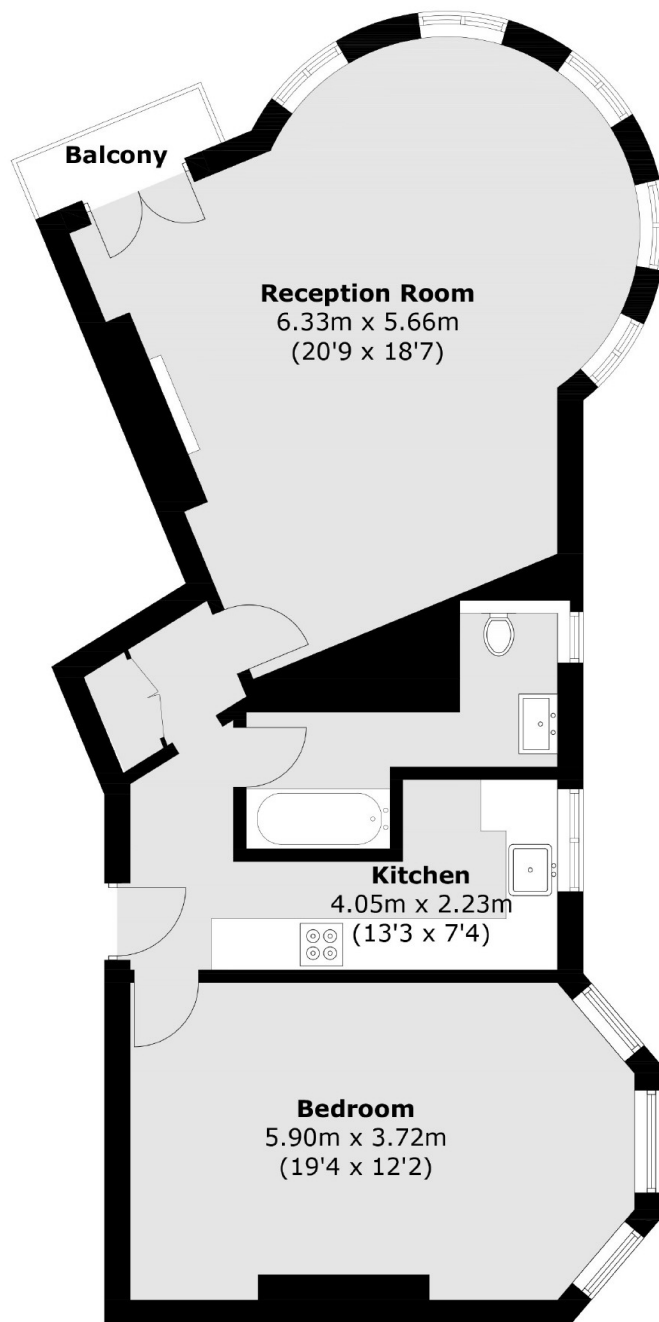


**Pembridge Villas, W2**





# Pembridge Villas, London, W2



Total area (approx.): 75.2 sq. m (809.4 sq. ft)  
Balcony area (approx.): 1.6 sq. m (17.2 sq. ft)