



Ladbroke Grove, W11

£773 Per week

This first-floor flat in a Victorian conversion offers high ceilings, large windows with green views, and a modern kitchen with integrated appliances. With ample storage in the two double bedrooms, a well finished bathroom, and Nest Security installed; the property is ideally located near Notting Hill Gate Station, Portobello Road, and Holland Park.

Located in Notting Hill, Ladbroke Grove offers excellent transport links with access to the District, Central, Circle and Hammersmith & City lines. The area features a range of amenities, including trendy cafes, boutiques, and the famous Portobello Road Market. Nearby green spaces and proximity to central Notting Hill enhance its vibrant appeal.

Features

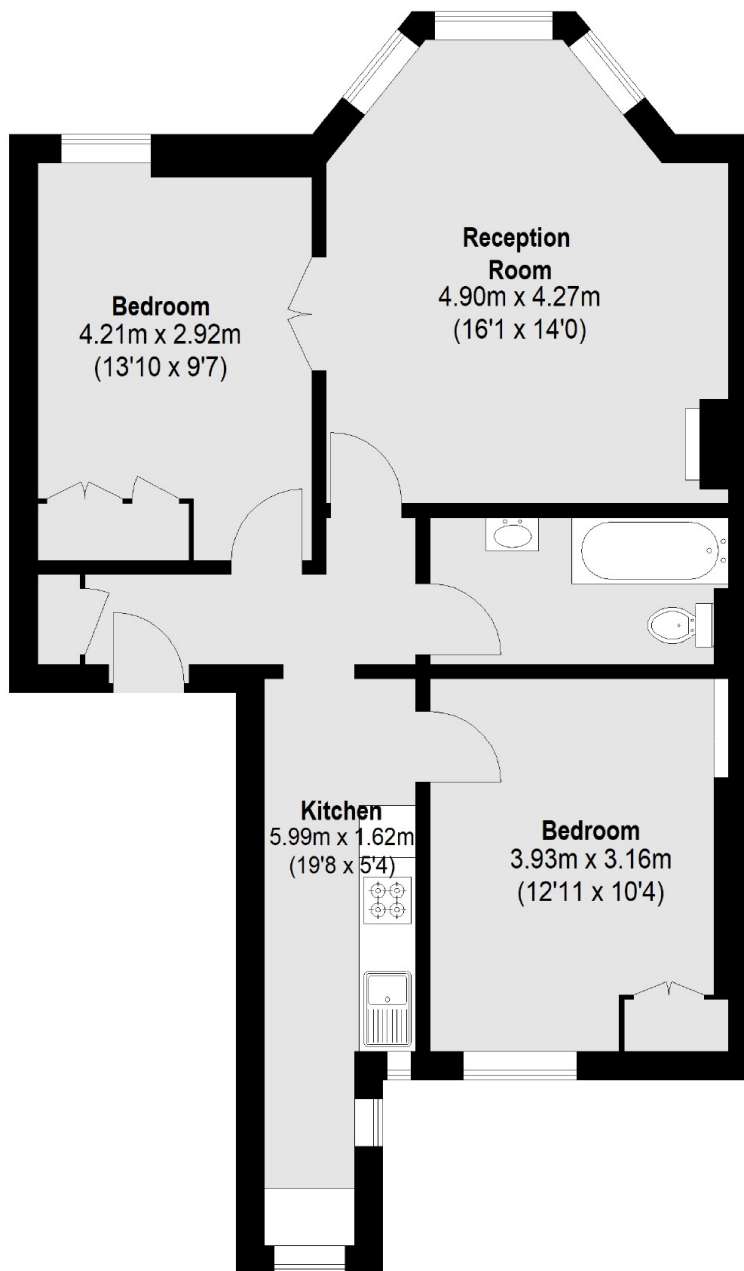
- Two Bedrooms
- One Bathroom
- High Ceilings
- Original Fireplace
- Separate Kitchen
- Utility Room



Ladbroke Grove, W11



Ladbroke Grove, London, W11



First Floor

Total area (approx.): 64.15 sq. m (691 Sq. ft)