



Brewster Gardens, W10

£369 Per week

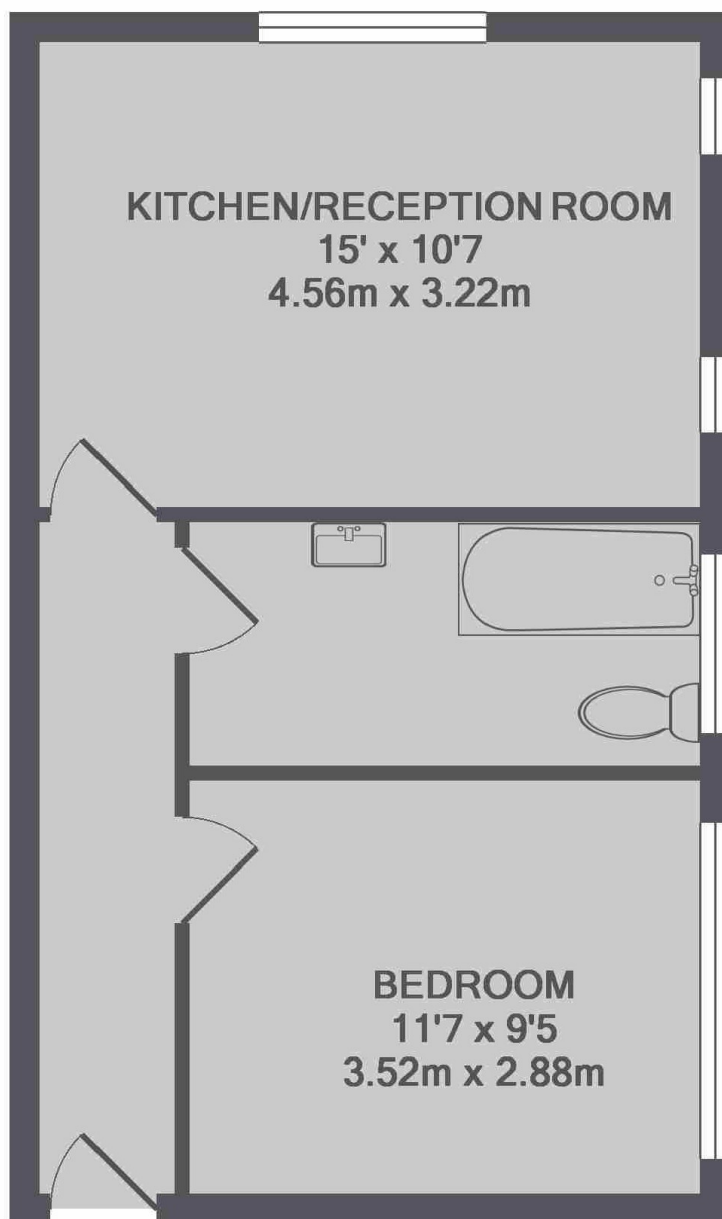
This recently refurbished one bedroom apartment is situated on the second floor of a well maintained purposed built block, with wood flooring throughout and an open plan kitchen.

This property is located on a residential street in, moments from all the local the shops and amenities. White City and Latimer Road stations are only 0.7 miles away.

Features

- One Double Bedroom
- Private Block
- Double Glazed Windows
- Open Plan Living
- Wood Floors
- Second Floor

Brewster Gardens,
London, W10



TOTAL APPROX. FLOOR AREA 383 SQ.FT. (35.6 SQ.M.)