



## Holland Park Road, W14

£923 Per week

A large two bedroom apartment with a large semi open plan kitchen, two bathrooms and wood flooring throughout, overlooking the beautifully landscaped communal gardens.

The property is situated in a prime location in Holland Park, with the bars, shops and the restaurants of High Street Kensington only 0.1 mile away.

### Features

- Two Bedrooms
- Two Bathrooms
- Third Floor Flat
- Wood Flooring
- High Ceilings
- Open Plan Kitchen



## Holland Park Road, W14

The flat is situated on the third floor of this impressive building, with two double bedrooms, two bathrooms and wood flooring throughout.

There is a centrally located hallway connecting all rooms. On entrance, there is a south facing, semi open plan reception room with a fully integrated kitchen.

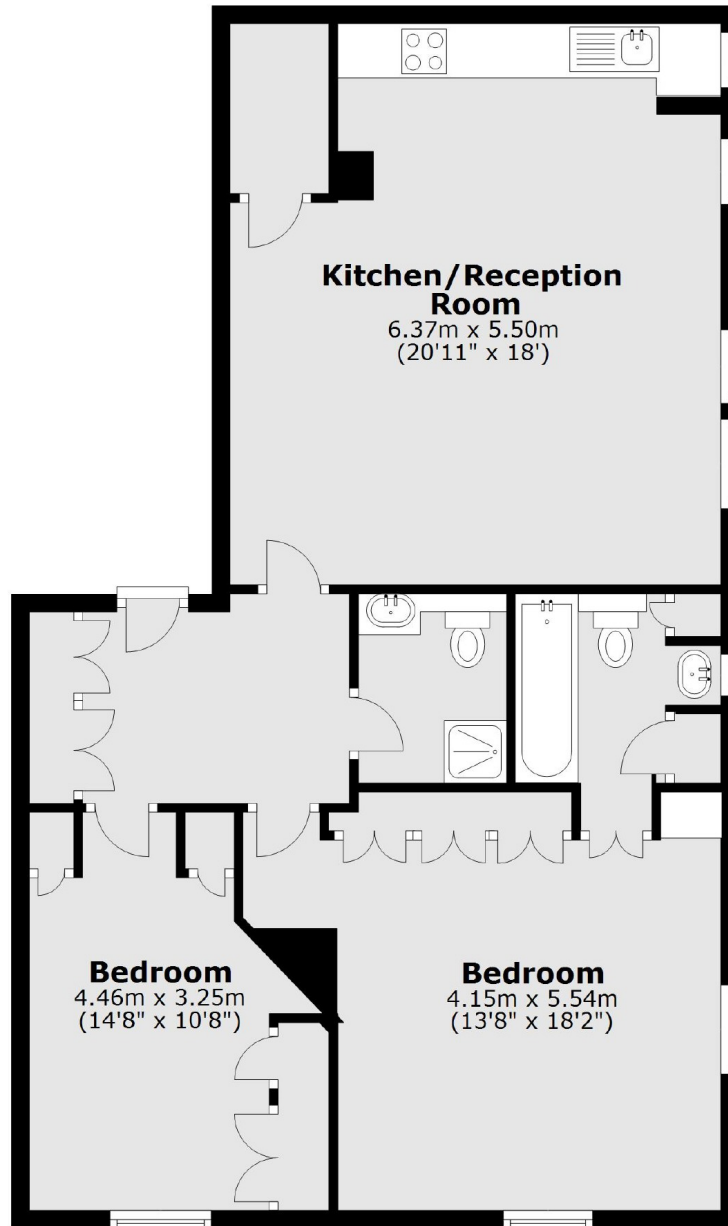
There is a master bedroom with an ensuite bathroom, a further double bedroom and a separate family bathroom. The property also has access to the rear communal gardens





# Holland Park Road, London, W14

## Third Floor



Total area: approx. 88.1 sq. metres (948.8 sq. feet)