



## Ladbroke Gardens, W11

£807 Per week

This elegant two bedroom period apartment boasts two equal double bedrooms, two bathrooms and has access to beautiful communal gardens. The large, bright semi-open plan reception overlooks the private gardens.

This flat is primely located within short walking distance to Notting Hill Gate and the shops and restaurants of Westbourne Grove.

### Features

- Two Bedrooms
- Two Bathrooms
- Communal Garden Access
- Ample Storage
- Semi-Open Plan
- Prime Location
- Modern Finish
- Notting Hill

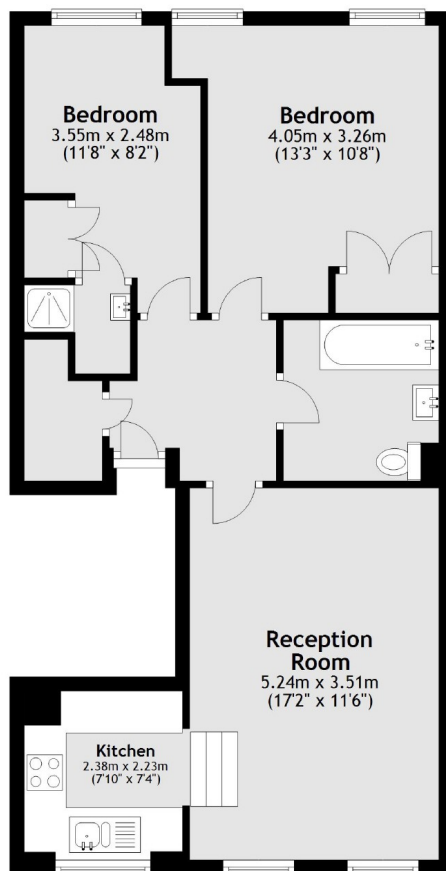


**Ladbroke Gardens, W11**





# Ladbroke Gardens, London, W11



Total area: approx. 61.2 sq. metres (659.0 sq. feet)