



## Ladbroke Road, W11

£2,307 Per week

**Dexters**



## Ladbroke Road, W11

A substantial five double bedroom house ideally positioned on the prestigious Ladbroke Road. The house benefits from a large double fronted reception, three bathrooms, lofted ceilings with period features and a large eat-in kitchen with direct access to a private garden.

The great transportation and shopping options at Notting Hill Gate (Central, Circle, and District lines) are 0.1 miles away whilst Holland Park (Central line) is 0.3 miles from the house. Additionally, the royal green spaces of Holland Park and Kensington Gardens are a short walk.

### Features

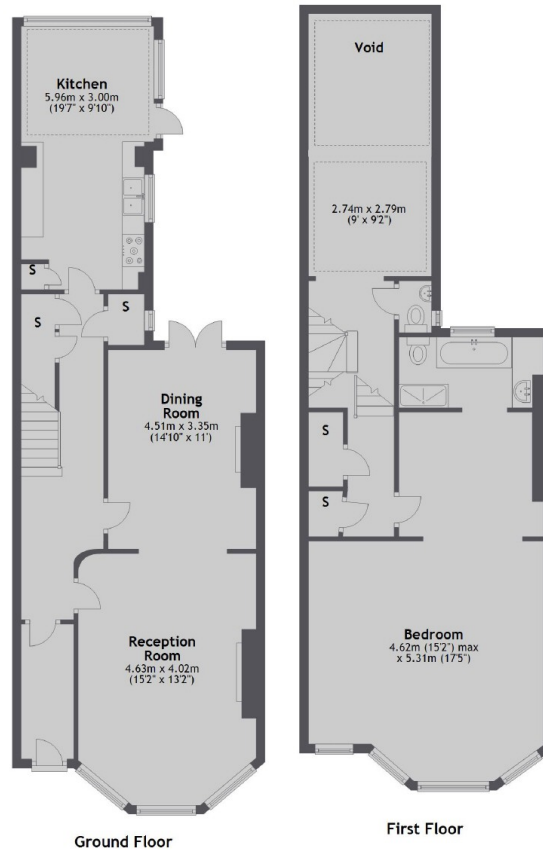
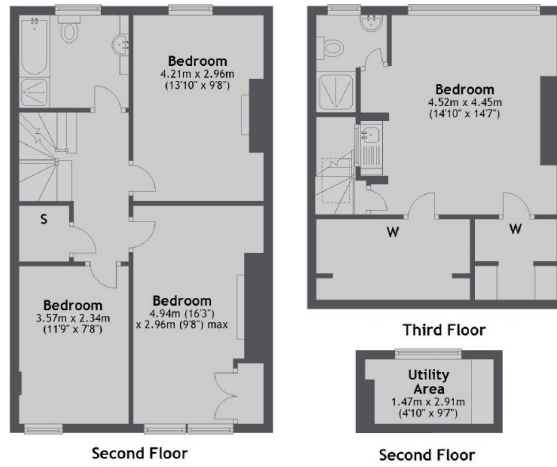
- Five Double Bedroom House
- Three Bathrooms
- Eat-In Kitchen
- Period Features
- Private Garden
- 2435 Square Feet







# Ladbroke Road, London, W11



Total area: approx. 226.3 sq. metres (2435.4 sq. feet)