



Kensington Gardens Square, W2

£9,615 Per week

Dexters



Kensington Gardens Square, W2

This exceptional penthouse apartment is located in the heart of Westbourne Grove and offers over 2500 sqft of lateral space. The property features three spacious bedrooms, a large double reception room, and a bespoke kitchen equipped with Miele appliances. Enjoy the luxury of two balconies and a large south-facing roof terrace, perfect for entertaining. The principal suite includes a dressing room and a freestanding bathtub for ultimate relaxation. Additional amenities include a 24/7 porter, elevator access directly into the property, and secure gated underground parking. This apartment combines elegance, convenience, and modern luxury in one of London's most sought-after locations.

Westbourne Grove is a vibrant and prestigious area in the heart of Notting Hill, renowned for its high-end boutiques, gourmet restaurants, and stylish cafes. This fashionable neighborhood offers a blend of period charm and contemporary luxury. Residents enjoy proximity to popular landmarks like Portobello Road Market and Kensington Gardens. Excellent transport links, including nearby Notting Hill Gate and Bayswater stations, provide easy access to the rest of London, making Westbourne Grove a highly desirable address.

Features

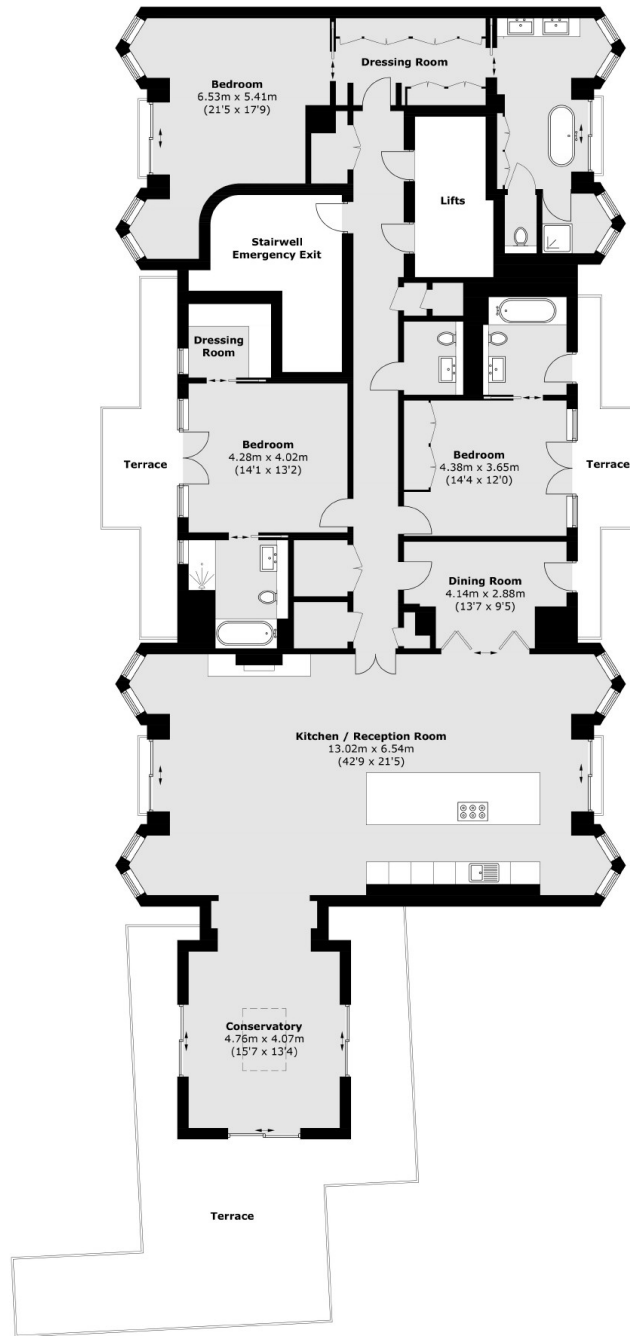
- Stunning Penthouse Apartment
- 2500 square feet
- 24 hour security
- Underground parking
- Roof Terrace
- Direct Lift Access







Kensington Gardens Square, London, W2



Total area (approx.): 256.8 sq. m (2764.2 sq. ft)
(Excluding Stairwell Emergency Exit / Lifts)
Terrace Area (approx.): 73.8 sq. m (794.4 sq. ft)