



Brewster Gardens, W10

£363 Per week

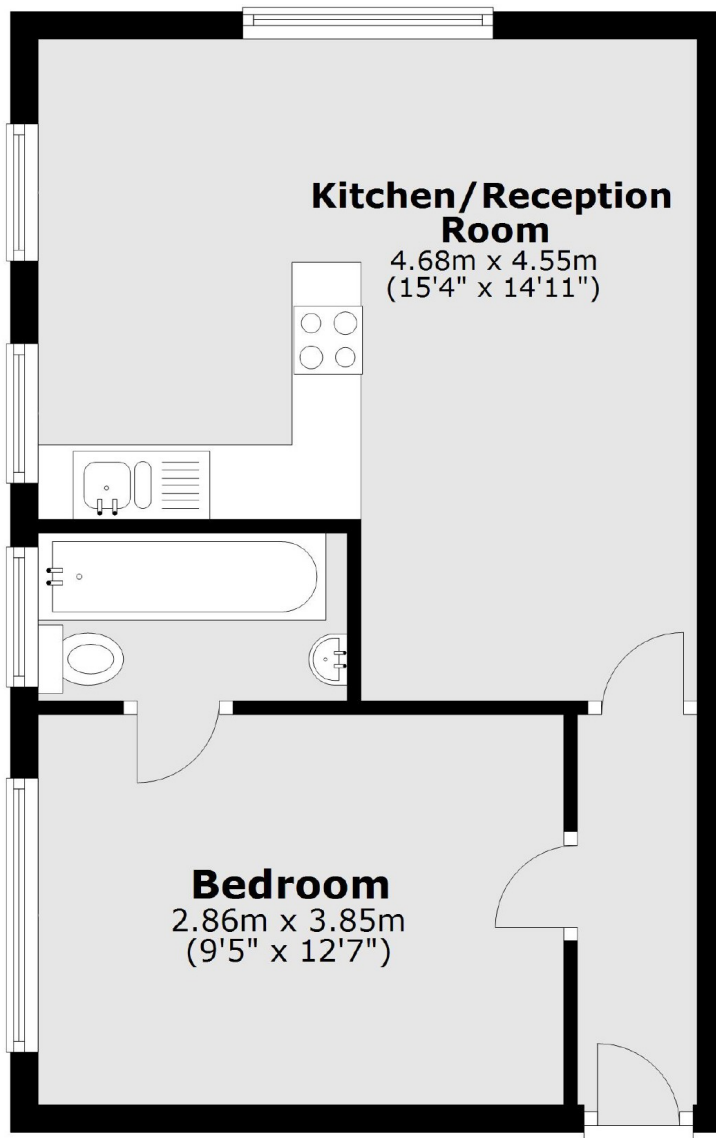
One double bedroom flat to let within a purpose built building on a quiet residential street in North Kensington. The flat is large, bright and has been finished to a good standard through.

Coronation Court is located on Brewster Gardens, it is a short walk away from the local amenities including a post office and local butchers.

Features

Large One Bedroom Flat
Open Plan Living/Kitchen
En-Suite Bathroom
Purpose Built Building
Wooden Flooring

Brewster Gardens, London, W10



Total area: approx. 37.6 sq. metres (404.7 sq. feet)