



## Princes Square, W2

£690 Per week

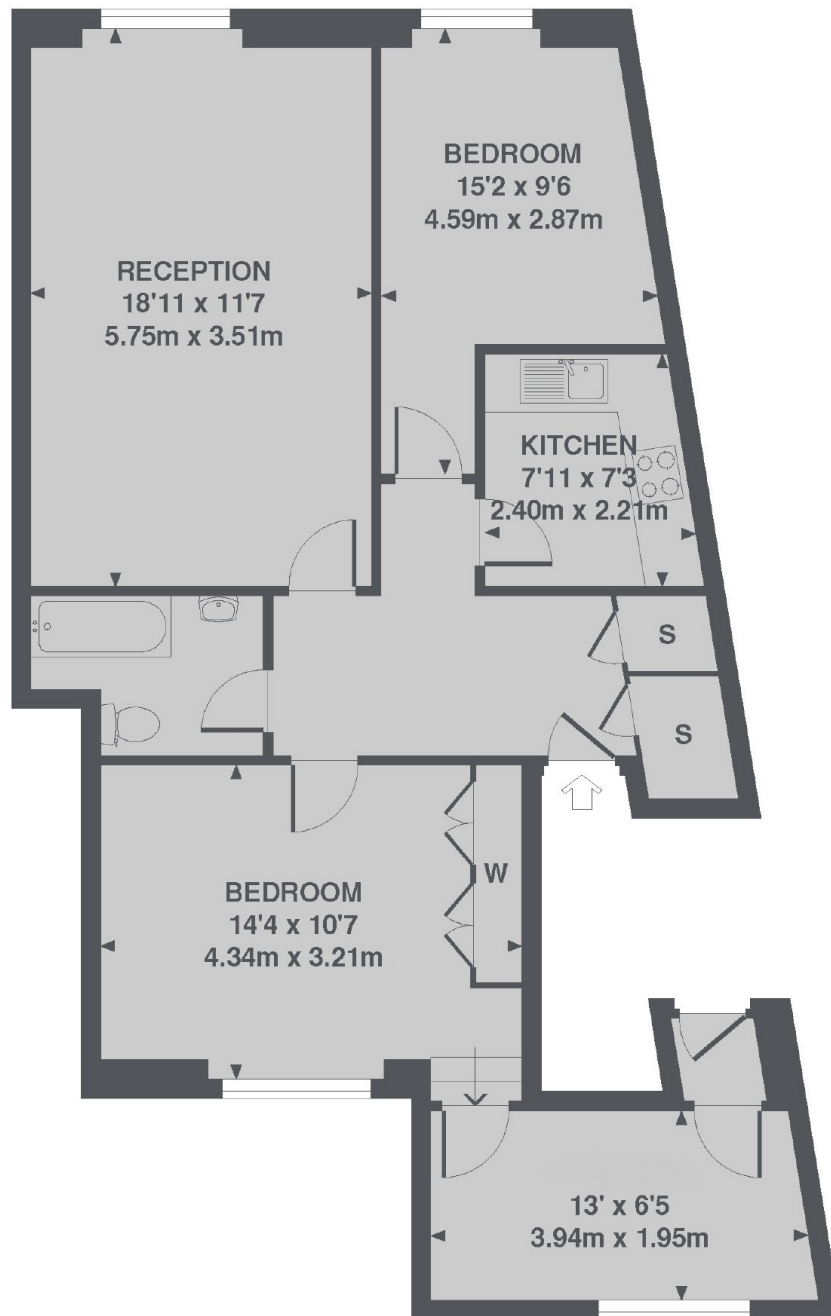
A large two bedroom flat on the second floor of this Victorian conversion includes, separate kitchen and wooden floors throughout set in a popular residential garden square close to Bayswater.

Located close to central line, there are plenty of restaurants, amenities and bars around including the likes of Pharmacy on Westbourne Grove.

### Features

- Large Two Bedrooms
- Second Floor
- Period Conversion
- Separate Kitchen
- Wooden Flooring
- High Ceilings

# Princes Square, London, W2



TOTAL APPROX. FLOOR AREA 774 SQ. FT. (71.9 SQ. M.)