



Portobello Road, W11

£507 Per week

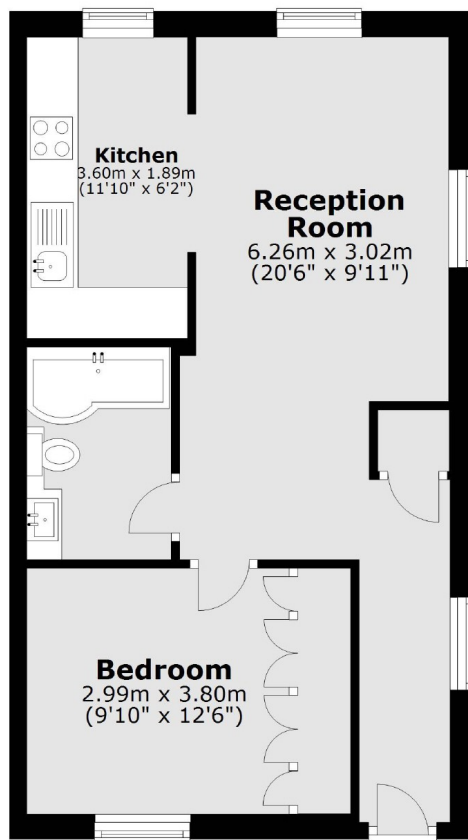
A brilliant one double bedroom top floor apartment with an impressive outlook down Portobello Road and across the London skyline. The property offers an abundance of natural light and wooden floors.

Located on the world famous Portobello Road you have an abundance of local eateries and shops on the doorstep. Notting Hill Gate and Ladbrooke Grove Tube Stations are within a short walk.

Features

Bright Top Floor Apartment
One Double Bedroom
Wooden Flooring
Impressive Outlook
Portobello Road
Flexible Furnishings

Portobello Road, London, W11



Total area: approx. 47.4 sq. metres (510.3 sq. feet)