



Queensdale Crescent, W11

£725 Per week

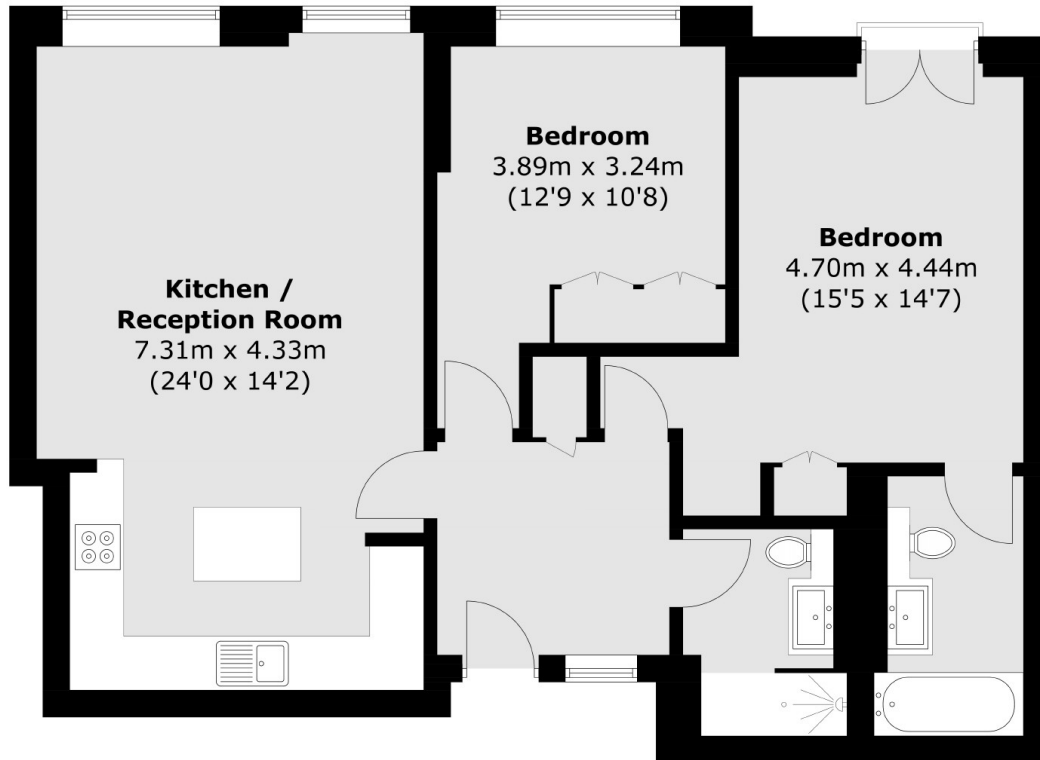
A delightful one-bedroom Short Let flat situated in the prestigious Norland House, nestled in the heart of Holland Park. Perfectly suited for a short-term stay, this cozy residence offers a blend of comfort, style, and convenience.

Holland Park is a prestigious and leafy area in West London, renowned for its elegant Victorian architecture, tranquil green spaces, and vibrant local culture. The neighbourhood offers excellent amenities, boutique shops, gourmet restaurants, and convenient transport links, making it an ideal location for a sophisticated and comfortable lifestyle.

Features

- Only Available For Short Let
- Inviting Living Space
- Modern Kitchen
- Comfortable Bedroom
- Portered Building
- Close To Tube

Queensdale Crescent, London, W11



Total area (approx.): 77.8 sq. m (837.4 sq. ft)