



Hereford Road, W2

£495 Per week

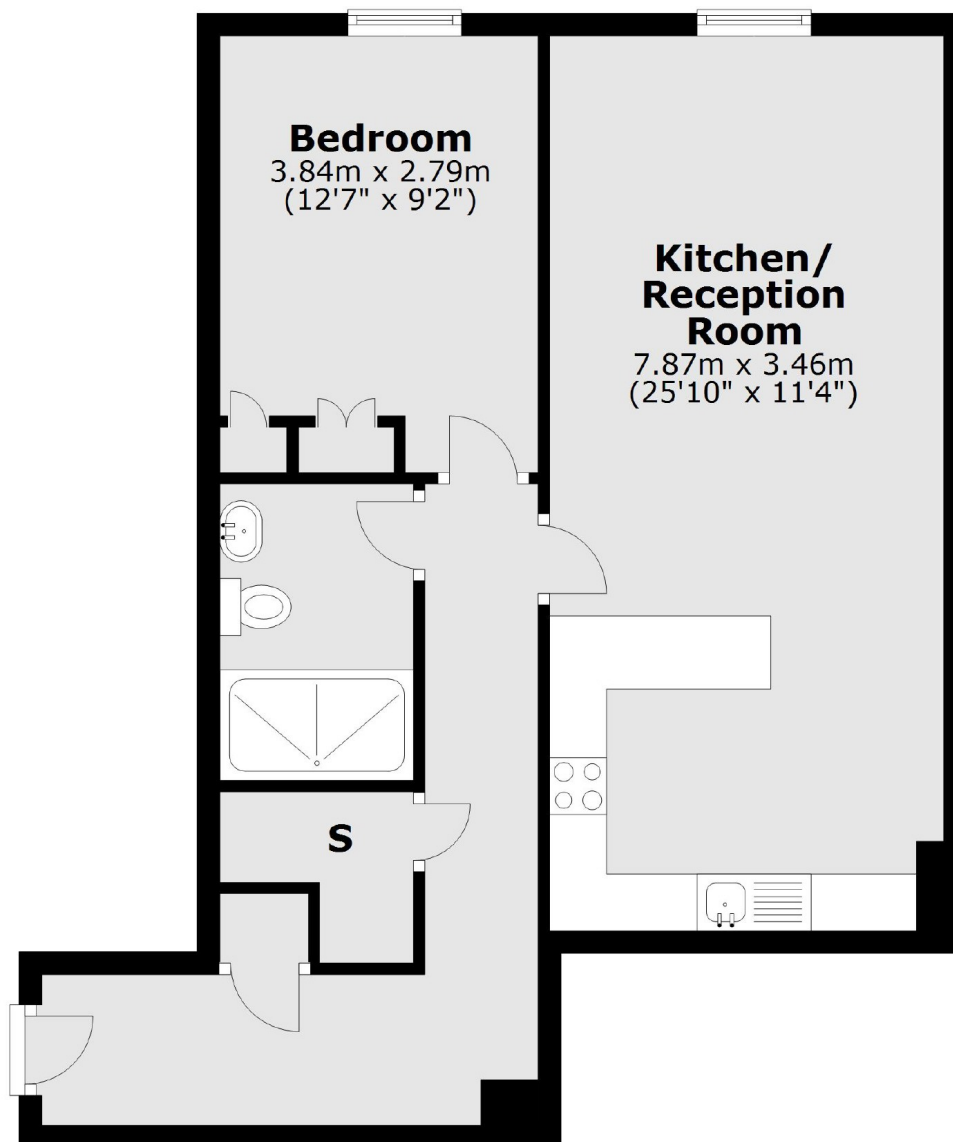
A spacious one bedroom apartment situated on the first floor of this popular portered development, with an open plan kitchen reception room, wood flooring and a residents gym.

The building is ideally situated off Westbourne Grove and allows for easy access to Notting Hill Gate, Paddington and Hyde Park, while Bayswater station is only 0.4 miles away.

Features

- One Bedroom
- Open Plan Kitchen
- Plenty Of Storage
- Gym Access
- Wood Flooring
- Neutral Decor

Hereford Road,
London, W2



First Floor

Total area: approx. 56.9 sq. metres (612.6 sq. feet)