



## Leinster Square, W2

£1,661 Per week

**Dexters**



## Leinster Square, W2

A impeccably refurbished three bedroom top floor apartment overlooking your own residents garden square. Behind the grand stucco-frontage with its tall, west facing arched windows, this meticulously restored building is offered in brand new condition.

The building was recently completed to a high specification to include comfort cooling, open plan designer kitchens with integrated appliances, oak parquet flooring to living areas and carpets to bedrooms.

Queensway and Bayswater underground stations are located 0.3 miles from the property whilst the Elizabeth Line and Heathrow Express can be accessed from Paddington. A selection of fashionable boutiques and restaurants on Westbourne Grove are only a short walk away in Notting Hill, as are the green spaces of Kensington Gardens and Hyde Park.

### Features

- Meticulous Restoration
- Brand New
- Three Bedroom Apartment
- Two Bathrooms
- Top Floor
- Underground Heating

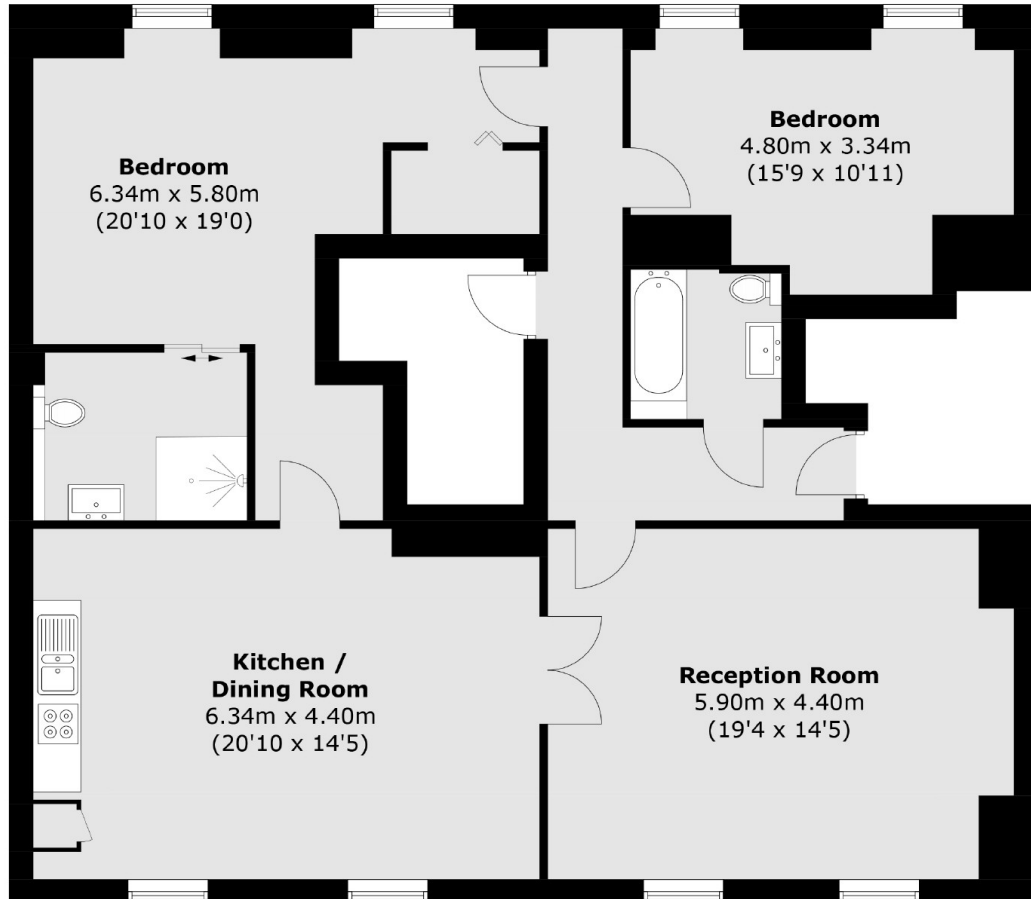








# Leinster Square, London, W2



Total area (approx.): 113.3 sq. m (1,220.0 sq. ft)