



Lorne Gardens, W11

£519 Per week

Dexters



Lorne Gardens, W11

An exceptionally spacious one double bedroom flat within a prestigious gated development with brand new wooden flooring, a separate kitchen, new modern appliances and a large bedroom with built in storage.

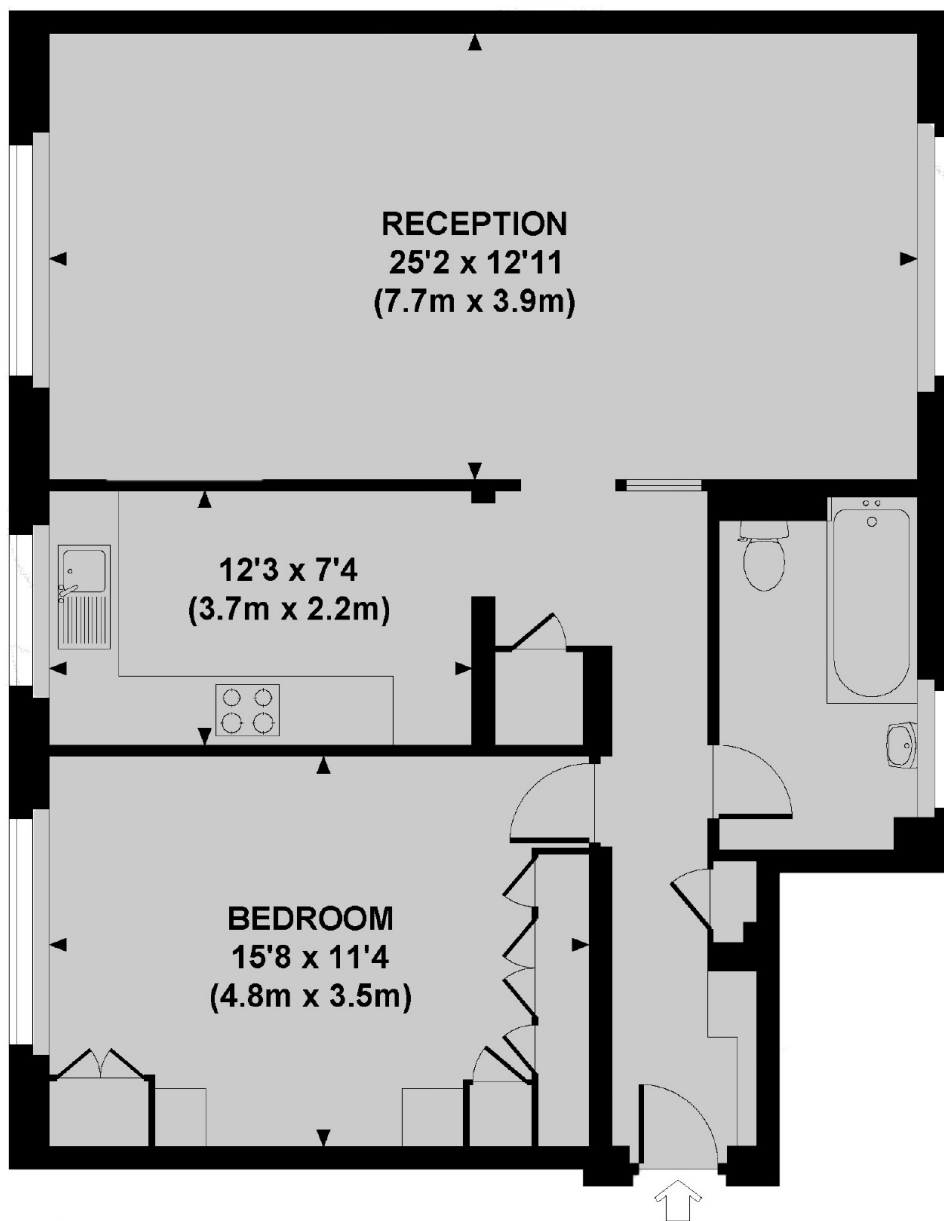
Lorne Gardens is quietly tucked away just behind Holland Park Avenue and Holland Road is convenient for the many local amenities of both Holland Park and Shepherds Bush including the famous Westfield Shopping centre.

Features

- One Bedroom
- Heating Bills Included
- West facing living Room
- Oak Floors
- Built In Storage
- Separate Kitchen



Lorne Gardens, London, W11



FIRST FLOOR

Approx. gross internal area
775 Sq Ft. / 72 Sa M.