



Royal Crescent Mews, W11

£595 Per week

A charming two double bedroom Mews House arranged over three levels benefitting from a large open-plan living room, Juliette balcony, ideally located within a short walk of Holland Park Tube Station

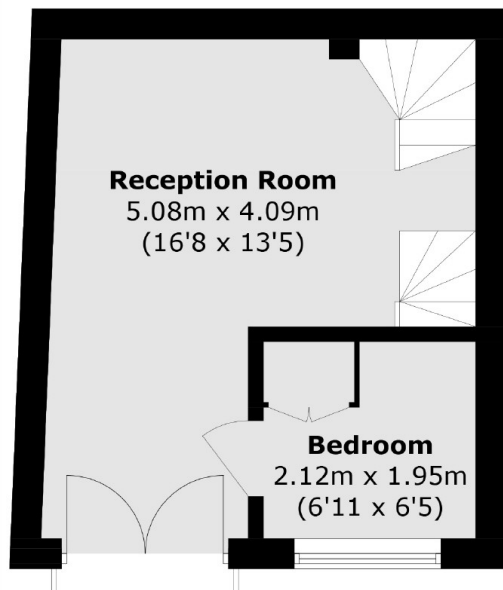
Features



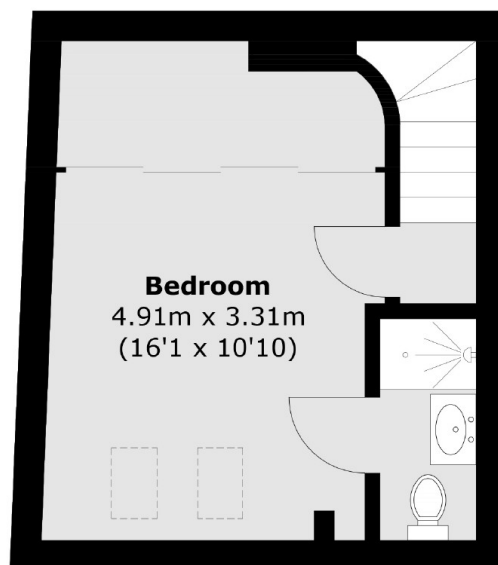
Royal Crescent Mews, W11



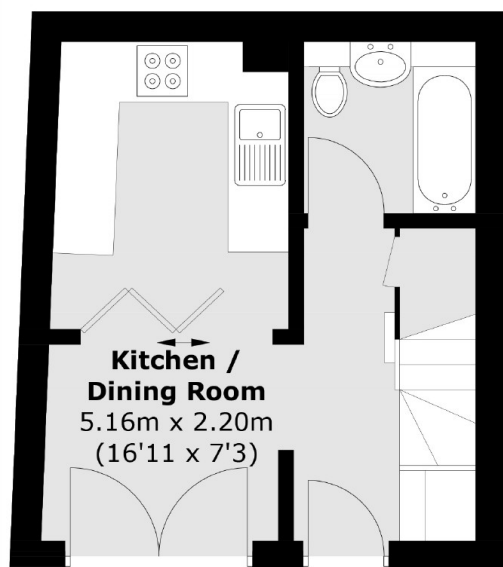
Royal Crescent Mews, London, W11



First Floor



Second Floor



Ground Floor

Total area (approx.): 63.0 sq. m (678.1 sq. ft)