



## Holland Park, W11

£4,450 Per week

**Dexters**



## Holland Park, W11

A meticulously refurbished and architecturally designed three bedroom apartment with two bathrooms, high ceilings and original period features perfectly positioned in prime Holland Park.

The property is ideally located on Holland Park within a close proximity to all the shops, bars and restaurants of Notting Hill Gate, Holland Park and High Street Kensington. Holland Park tube station is a short moments walk away.

### Features

- Architecturally Designed
- High Ceilings
- Original Period Features
- Two Luxury Bathrooms
- Generous Natural Light
- Prime Holland Park





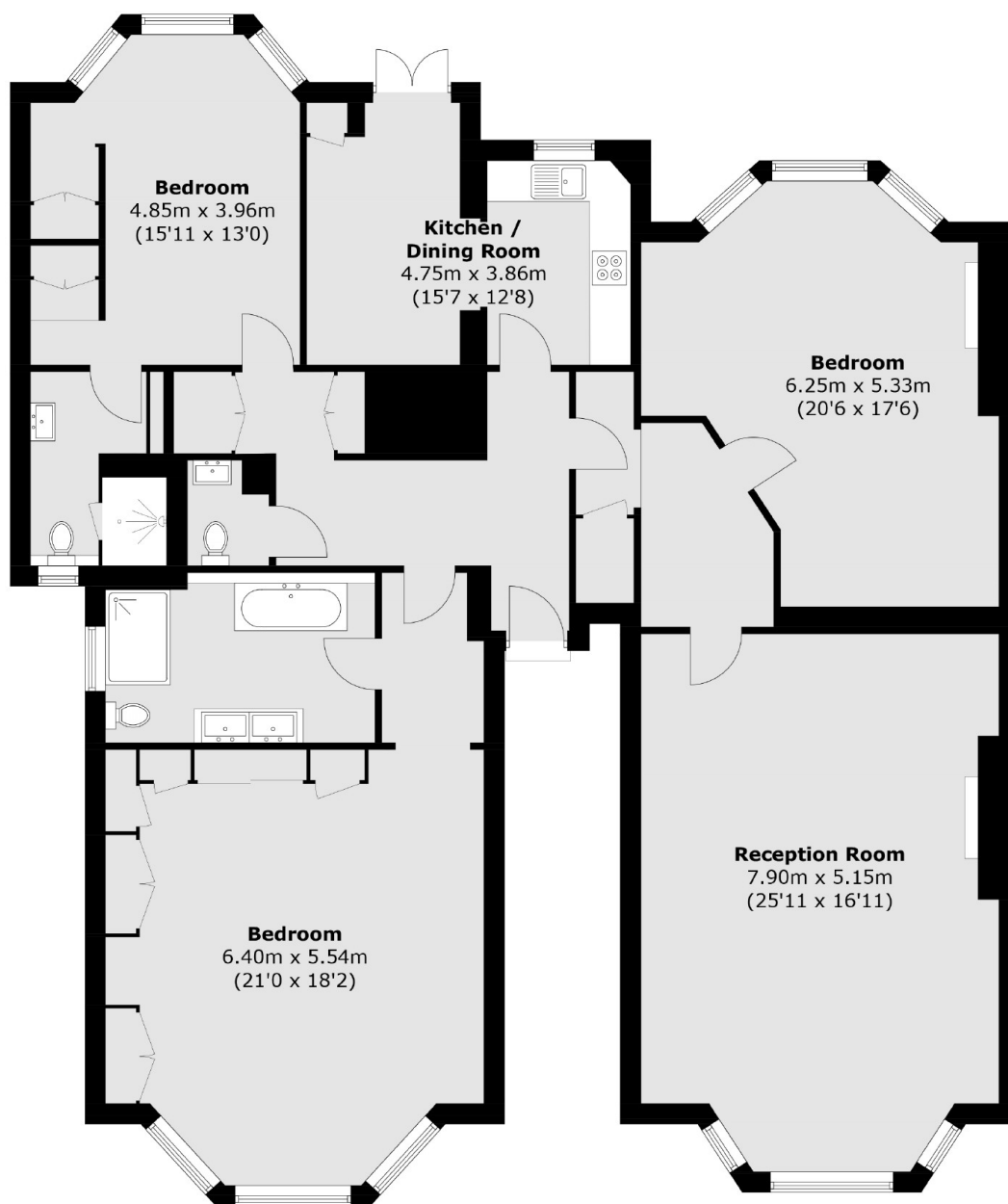








# Holland Park, London, W11



## Ground Floor

Total area (approx.): 181.3 sq. m (1,951.7 sq. ft)