



Bayswater Road, W2

£807 Per week

Dexters



Bayswater Road, W2

A large and bright three double bedroom apartment situated on the second floor of this well maintained portered building that is ideally located opposite Kensington Gardens. The apartment offers 974 square feet of functional lateral living space, two bathrooms and a large reception with wooden flooring and a Juliette balcony. The rent includes the cost of heating, water, electricity and a Wifi/TV package.

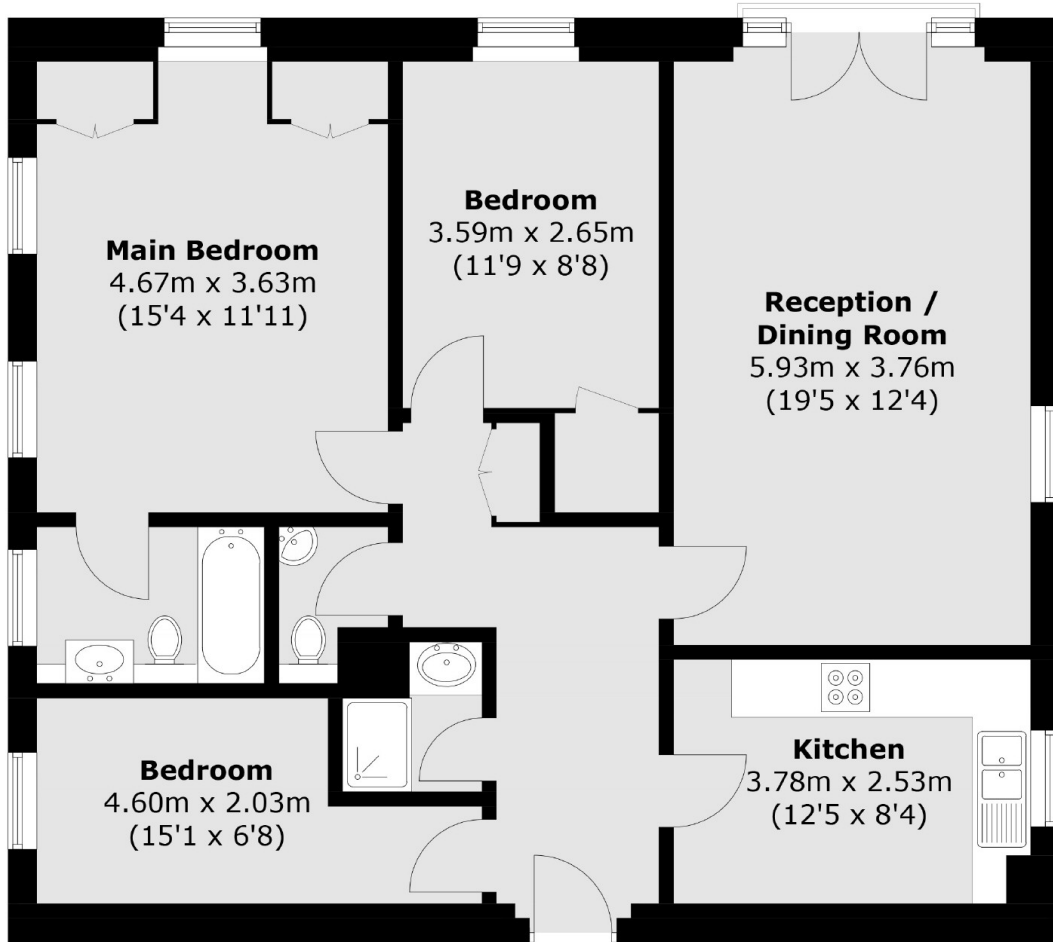
The property is ideally located close to all the local amenities of Bayswater, Notting Hill and Westbourne Grove whilst Bayswater and Queensway Tube Stations are less than 0.2 miles from the property.

Features

- Three Double Bedrooms
- Two Bathrooms
- Separate Kitchen
- Second Floor Flat
- Lift Access
- Portered Development



Bayswater Road,
London, W2



Total area (approx.): 90.5 sq. m (974.1 sq. ft)