



St. Stephens Gardens, W2

£0 Per week

A well maintained two bedroom duplex flat on the first and second floor of this period conversion and benefitting from wood flooring and located in the heart of Notting Hill.

Ideally located withing close proximity to the shops and amenities of Westbourne Grove including Granger & Co and JUSU brothers.

Features

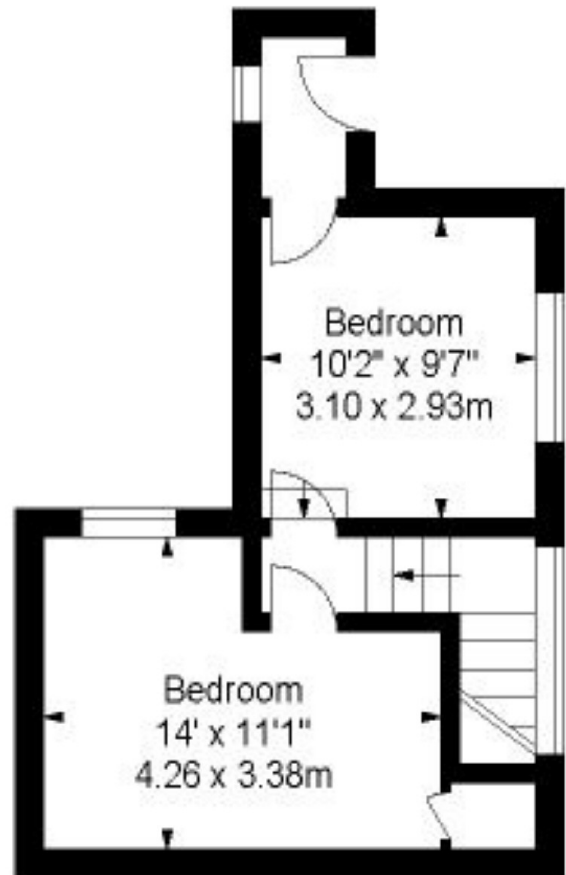
Two Double Bedrooms
Duplex Flat
Wood Flooring
High Ceilings

St. Stephens Gardens, London, W2

St Stephens gardens



First Floor



Second Floor

Approx Gross Internal Area 627 Sq Ft - 58.21 Sq M

Floor Plan Supplied For Identification Purposes Only And May Not Be Accurate
Floor Plan by www.elegantmediasolution.com