



Hatherley Grove, W2

£692 Per week

Dexters



Hatherley Grove, W2

A bright and spacious two double bedroom apartment on the third floor of a well maintained period conversion, with wood flooring throughout, a separate kitchen and plenty of storage.

Located off of Westbourne Grove the property has transport links at Queensway, Bayswater Underground stations and Paddington mainline/underground/Heathrow Express is just a short distance away.

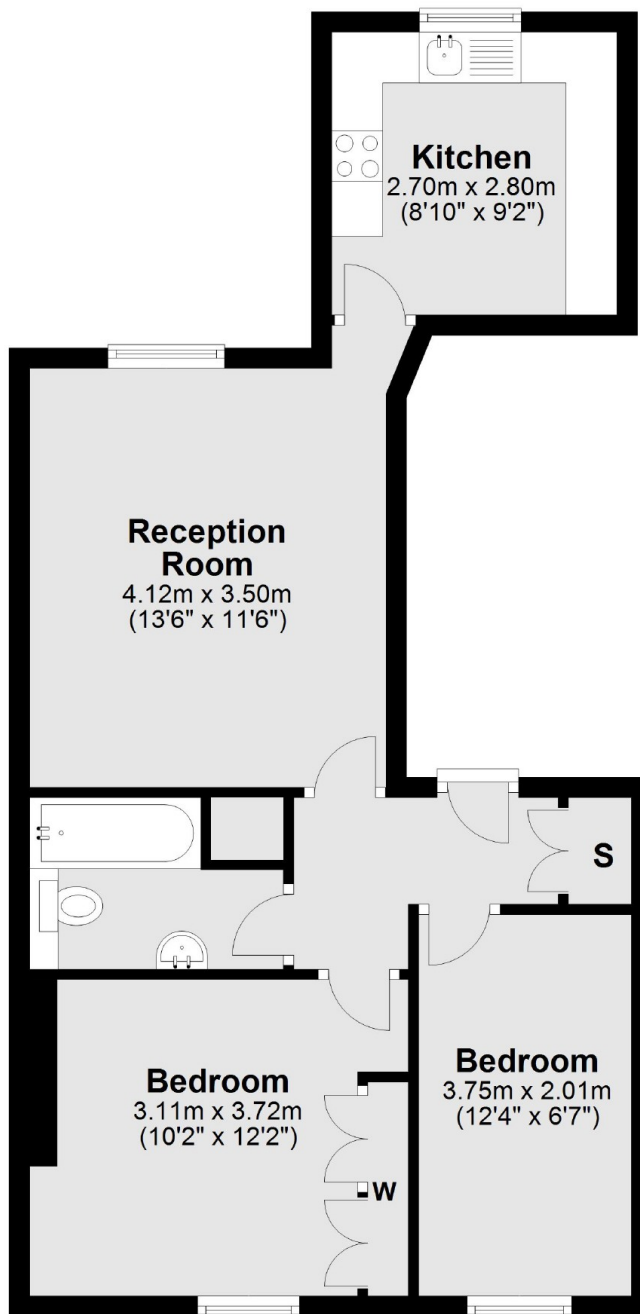
Features

- Two Double Bedroom
- Third Floor Flat
- Wood Flooring
- Separate Kitchen
- Plenty Of Storage



Hatherley Grove, London, W2

Third Floor



Total area: approx. 51.9 sq. metres (558.9 sq. feet)