



Kensington Gardens Square, W2

£1,748 Per week

Dexters



Kensington Gardens Square, W2

A luxury and contemporary two double bedroom apartment situated on the second floor of this prestigious new development. Ideally located on Kensington Gardens Square, just off Westbourne Grove in Notting Hill

The apartment further benefits include a generous two double bedrooms with built in storage and a large open plan living room and kitchen fully fitted with Miele appliances.

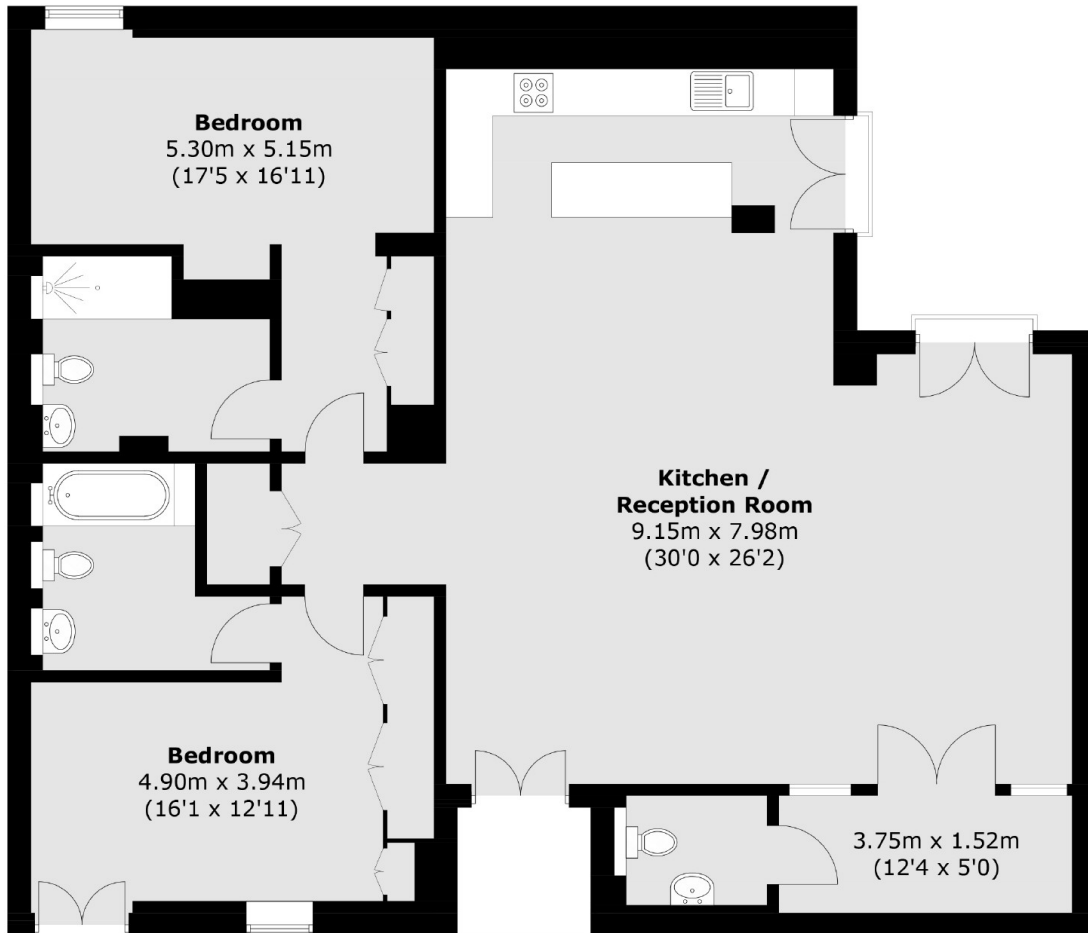
The development is conveniently located a few steps from the local shops and boutiques of Notting Hill. Bayswater Tube Station is 0.2 miles from the property whilst Queensway is 0.3 miles and Notting Hill Gate is 0.7 miles.

Features

- Two Bedroom Apartment
- Two Luxurious Bathroom
- Second Floor
- 1411 Sq Ft
- Oak wood flooring
- Luxury new development



Kensington Gardens Square, London, W2



Second Floor

Total area (approx.): 131.1 sq. m (1,411.1 sq. ft)