



Lorne Gardens, W11

£657 Per week

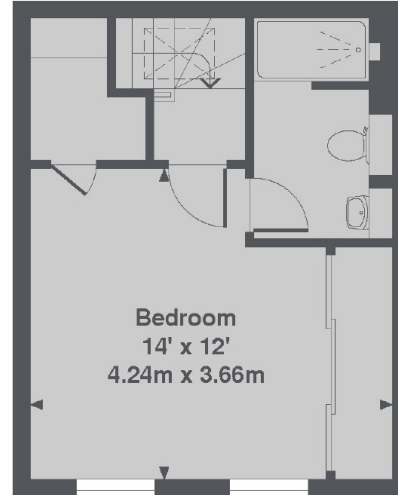
A stylish two bedroom, two bathroom house in a private cobbled mews near to Holland Park, This property has been recently refurbished throughout and has excellent living space.

Located just off Holland Park Avenue and walking distance to both Westfield Shopping Centre and Holland Park.

Features

- Two Bedrooms House
- Newly Refurbished
- Wooden Floors
- Two Bathrooms
- Private Entrance
- Cobbled Mews

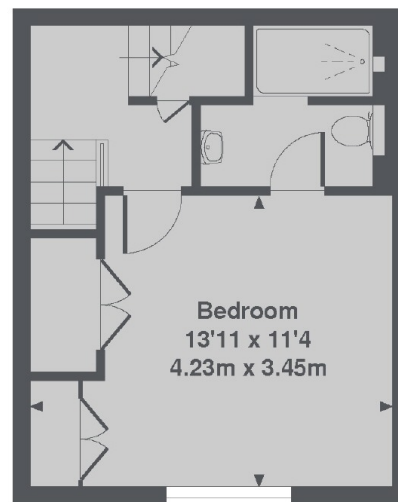
Lorne Gardens, London, W11



2nd Floor



Ground Floor



1st Floor

Lorne Gardens, W11
Total Approx. Floor area 750 Sq. Ft. (69.7 Sq. M.)