



## Burdett Mews, W2

£1,750 Per week

This end of terrace dual aspect mews house can be accessed from both Westbourne Gardens to the North via an automatic gate opening to a private driveway for two-three cars and Hatherley Grove via another secured gate.

Burdett Mews is a quiet gated mews moments from the popular bars, boutique shops and brasseries on Westbourne Grove. The property is situated nearby a selection of stations including; Paddington, Royal Oak, and Bayswater Station, ideal for commutes into the West End and City.

### Features

- Four Bedrooms
- Four Bathrooms
- Private Gardens & Driveway
- Gated Entrances
- Newly Renovated
- Dual Access



## Burdett Mews, W2

The home has undergone major renovation recently both internally and externally. Externally this included a major improvement to the facade with new large double glazed windows on all floors as well as Juliette balconies to the first and second floors. The garden and driveway have also been re-landscaped. Internally there is new flooring, kitchen, four redecorated bedrooms and four bathrooms.

Upon entering the property on the ground floor you are welcomed by a large entrance hall leading to a generous reception room, open-plan kitchen, separate dining area, double bedroom and shower room. The first floor offers two double bedrooms and two bathrooms (one en suite) whilst the principle also benefits from a walk-in wardrobe.

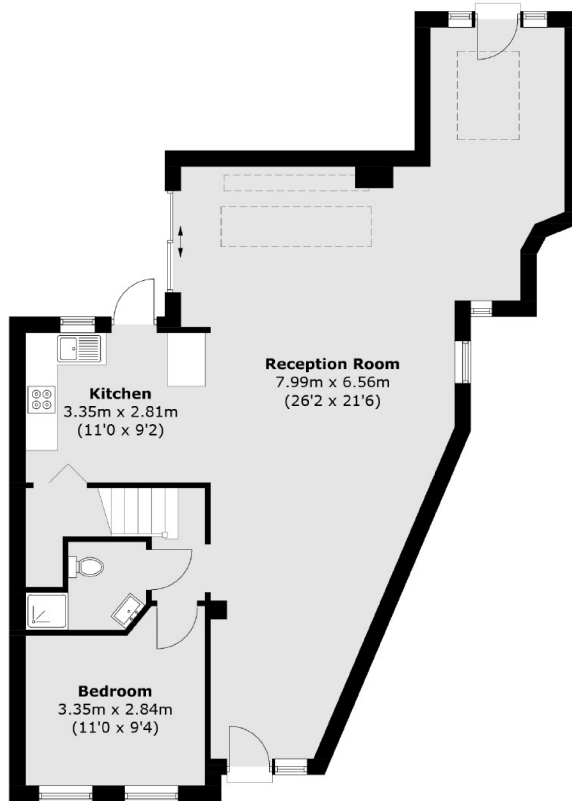


# Burdett Mews, London, W2



**First Floor**

**Second Floor**



**Ground Floor**

Total area (approx.): 155.7 sq. m (1,675.4 sq. ft)