



Campden Hill Gardens, W8

£957 Per week

A well presented two double bedroom duplex flat situated on the raised ground floor of a double fronted Victorian house, The property has a bright living/dining room with large bay windows.

Located just off Campden Hill Road moments from Notting Hill Gate amenities and Tube Station. Kensington High Street, Holland Park and Hyde Park are also within walking distance.

Features

- Two Double Bedrooms
- Raised Ground Floor
- Two Bathrooms
- Living/Dining Room
- Separate Kitchen
- Victorian Conversion
- Great Living Space
- Moments from Holland Park
- Kensington High Street
- Notting Hill Gate Tube



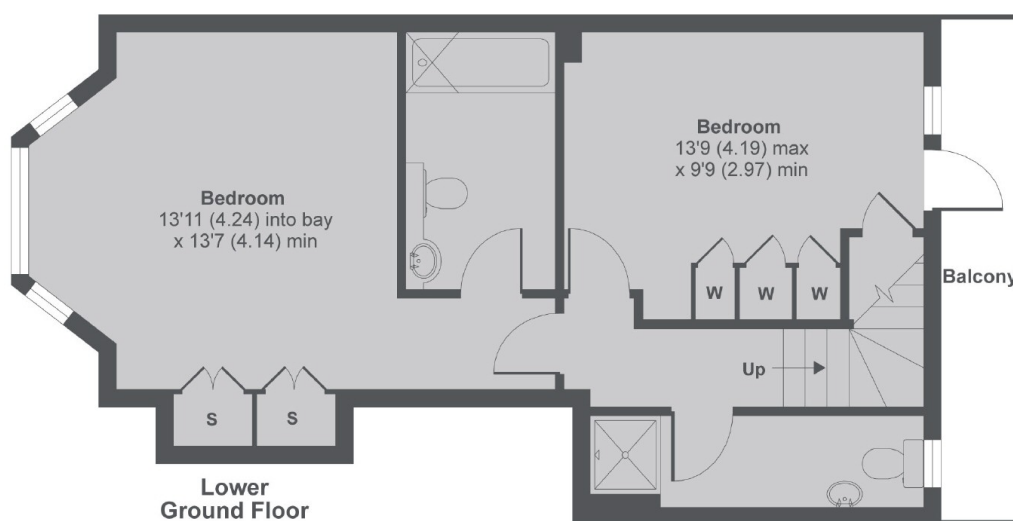
Campden Hill Gardens, W8



Campden Hill Gardens, London, W8



Ground Floor



Lower
Ground Floor

Campden Hill Gardens, London, W8

MAIN HOUSE APPROX FLOOR AREA 962 SQ.FT 89.3 SQ.M

Copyright nichecom.co.uk 2017 Produced for Dexters REF : 186283