



Dunworth Mews, W11

£923 Per week

This property is a beautifully finished two bedroom, two bathroom house within a gates mews. It has two large double bedrooms, one being an en-suite, and an open plan kitchen-living room. It also has secure garage parking.

Dunworth Mews is located just off of Portobello Road. It is walking distance to all local amenities as well as local bars and restaurants. The closest underground station in Ladbroke Grove which is on the Circle and Hammersmith & City lines.

Features

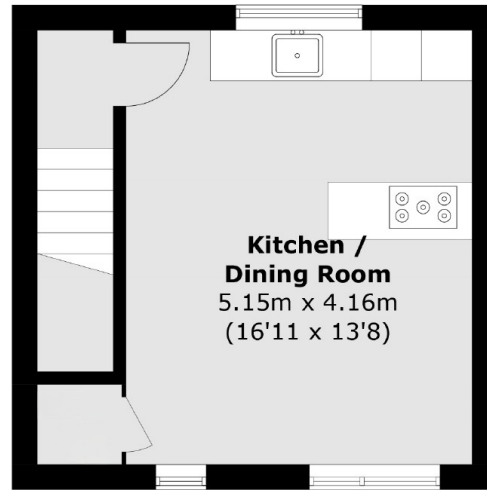
- Gates Mews
- Two Bedrooms
- Two Bathrooms
- Secure Parking
- Portobello Road
- Open Plan



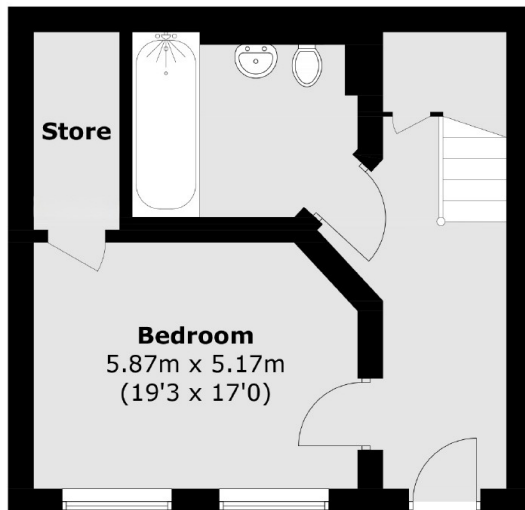
Dunworth Mews, W11



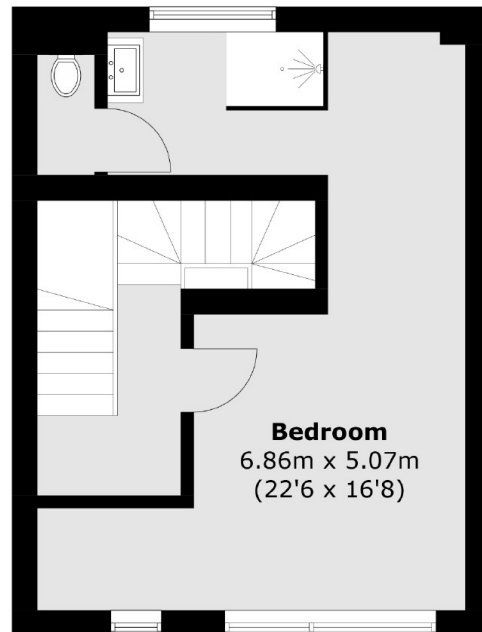
Dunworth Mews, London, W11



Second Floor



Ground Floor



First Floor

Total area (approx.): 91.8 sq. m (988.1 sq. ft)