

## Holland Park Gardens, W14

£740 Per week

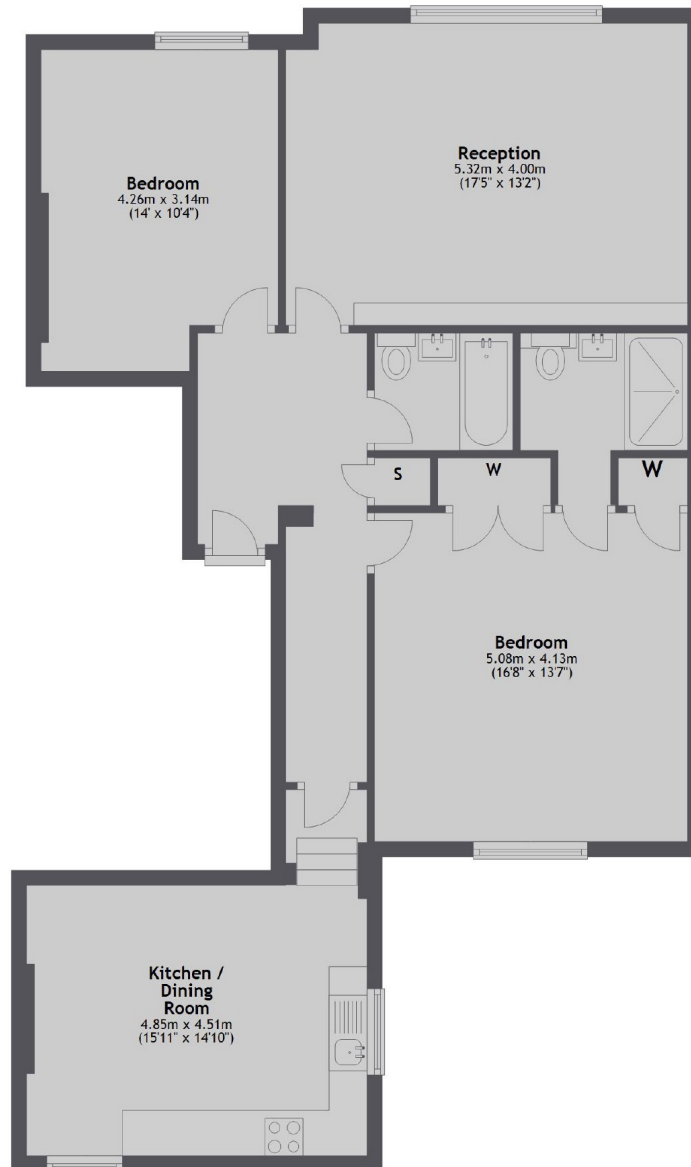
A bright and spacious recently refurbished two bedroom flat on the second floor of a period conversion, with a large eat in kitchen and separate West facing reception room.

The property is well situated on a residential street in the Holland Park area with local shops, cafes and Holland Park tube station only a short distance away.

### Features

- Two bedrooms
- Two bathrooms
- Separate kitchen
- Eat-in kitchen
- Bright
- Spacious
- Holland Park

## Holland Park Gardens, London, W14



### Third Floor

Total area: approx. 90.7 sq. metres (976.6 sq. feet)

### Contact

To arrange a viewing call our office on the number below or visit our website.



Energy Rating: C. We aim to make our particulars both accurate and reliable. However they are not guaranteed; nor do they form part of an offer or contract. If you require clarification on any points then please contact us, especially if you're traveling some distance to view. Please note that appliances and heating systems have not been tested and therefore no warranties can be given as to their good working order.