



Chepstow Place, W2

£1,038 Per week

Dexters



Chepstow Place, W2

This exceptionally large two bedroom apartment is located on the second floor of a popular portered development with wood flooring throughout, a large open plan kitchen, two bathrooms and a private parking space.

The property is ideally situated on the corner of Chepstow Place and Westbourne Grove with easy access to both Notting Hill Gate and Portobello Road.

Features

- Two Double Bedrooms
- Two Bathrooms
- High Ceilings
- Wood Flooring
- Under Ground Parking
- Portered Development

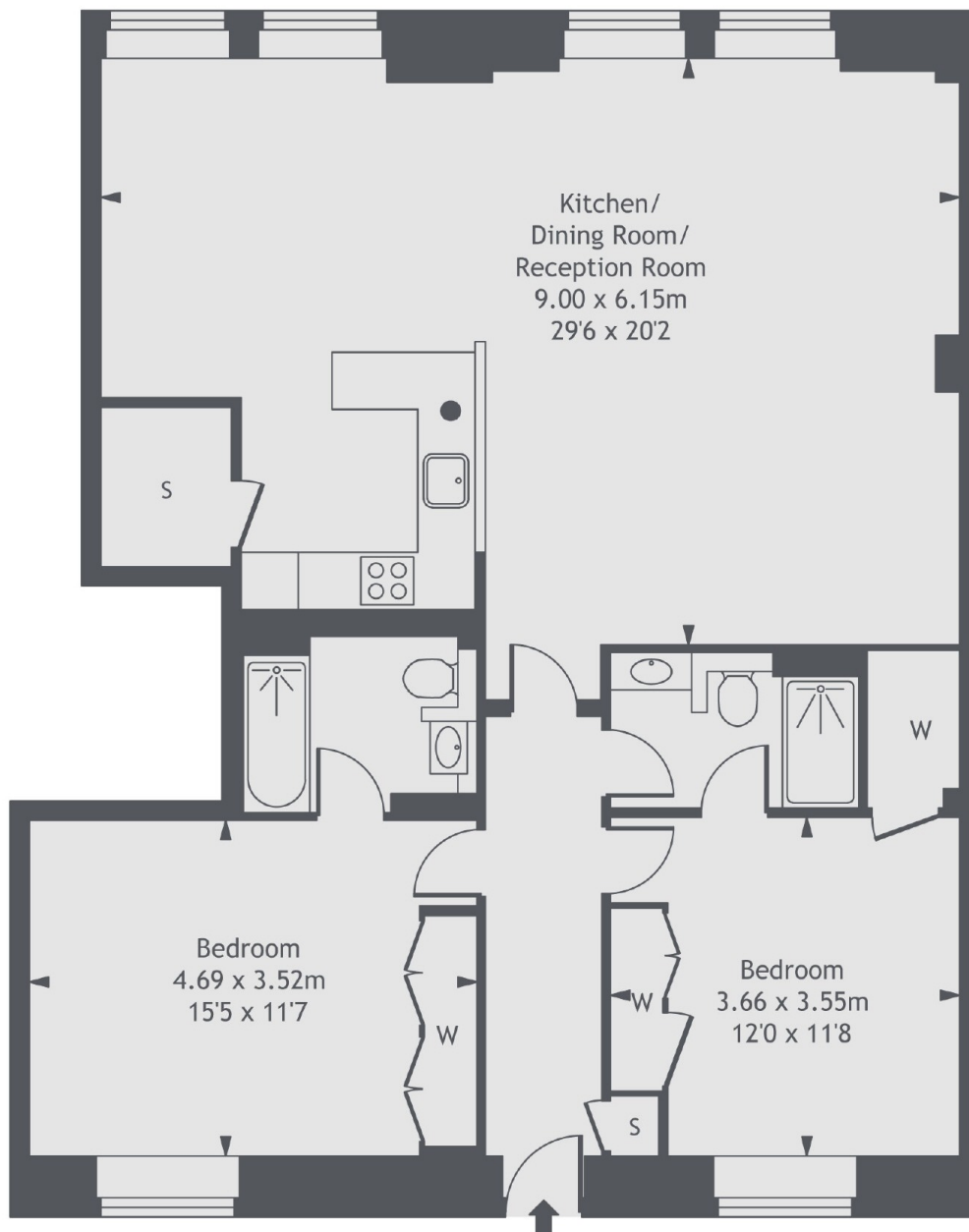






Chepstow Place, London, W2

Second Floor



Gross Internal Area 1,099 sq ft (102.10 sq m)