



St. Quintin Avenue, W10

£461 Per week

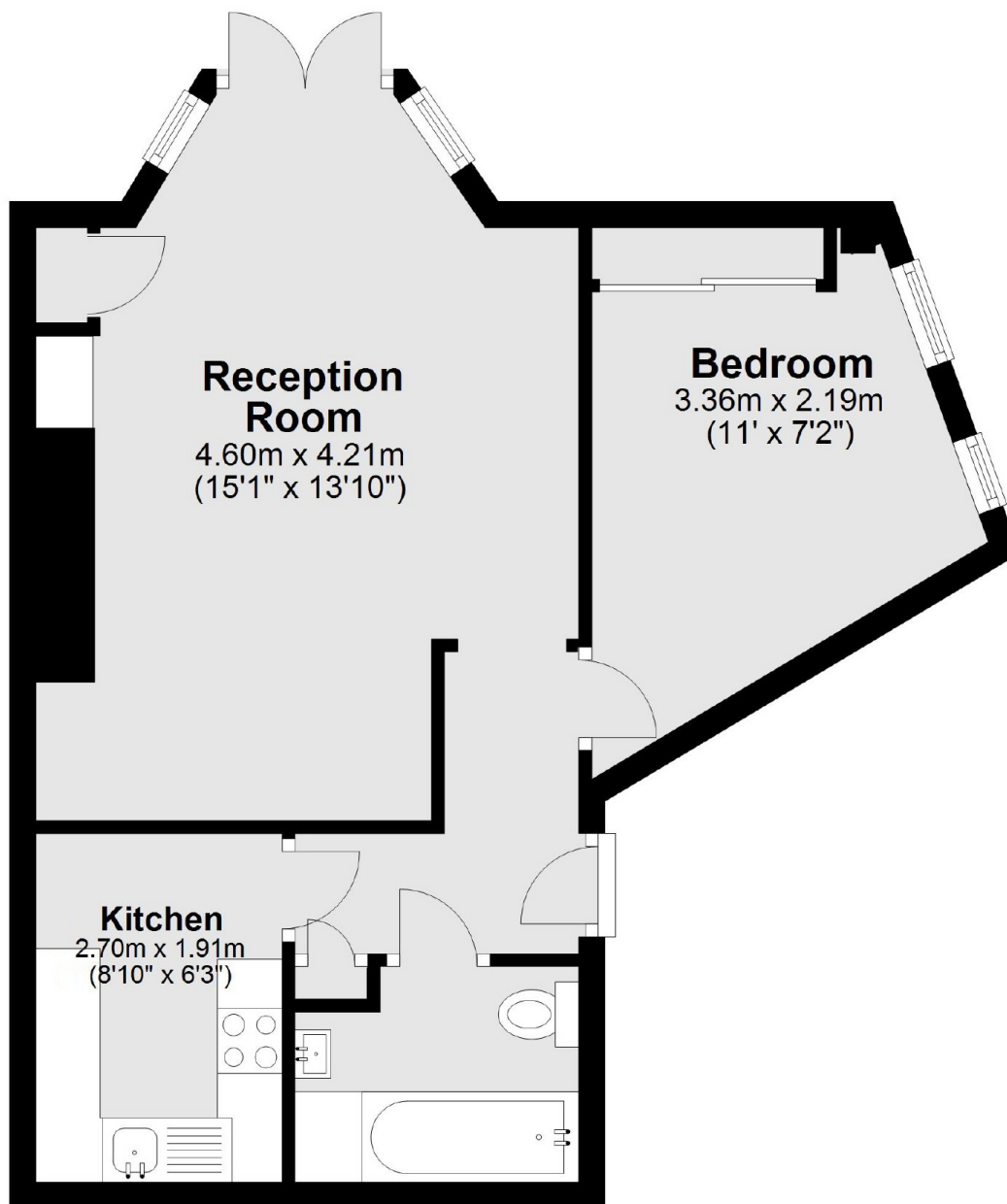
A newly decorated one double bedroom flat on the ground floor of a Victorian building, benefitting from high ceilings and wood flooring in the heart of North Kensington.

Located close to Portobello Market and it's fresh fruit and veg stalls, Sainsbury's supermarket is on Ladbroke Grove along with its Underground Station.

Features

- One Double Bedroom
- Ground Floor
- Victorian Building
- Spacious Reception Room
- Modern Kitchen
- Modern Bathroom

St. Quintin Avenue, London, W10



Total area: approx. 42.9 sq. metres (461.7 sq. feet)