



Princes Mews, W2

£1,950 Per week

Dexters



Princes Mews, W2

A newly refurbished South facing four double bedroom mews house, situated over three floors and benefitting from wood flooring and new appliances.

This immaculate mews house benefits from four bedrooms, three bathrooms and an option for garage use also in this cobbled mews in the heart of Notting Hill

On the ground floor there is one large bedroom with a further room which can be for garage or bedroom use. There is a large reception space on the first floor with an open plan kitchen with integrated appliances. A perfect space for entertaining and dining.

There two further en suite bedrooms on the second floor with fitted storage and wood flooring. This house is perfect for families looking to be close to the open spaces of Hyde Park and shops at Westbourne Grove.

Princes Mews is ideally located within close proximity of Westbourne Grove and Hyde Park offering access to local shops and restaurants such as Jusu Brothers and Granger & Co.

Features

- Four Bedrooms
- Garage
- Off Street Parking
- Open Plan Layout
- South Facing
- Newly Refurbished

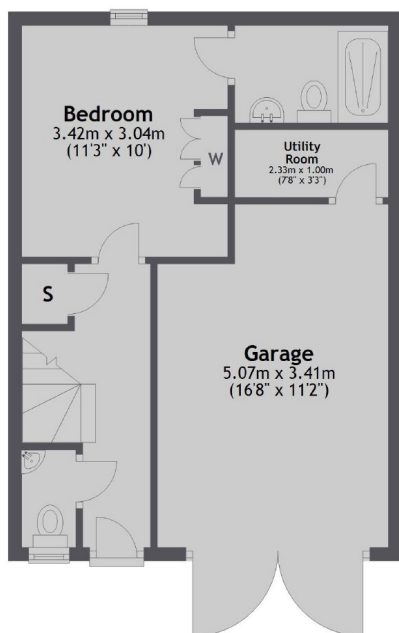




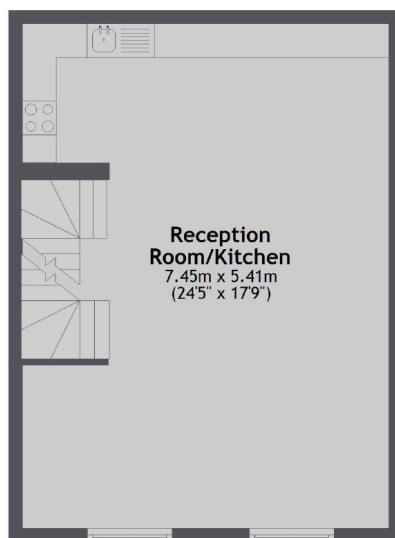


Princes Mews, London, W2

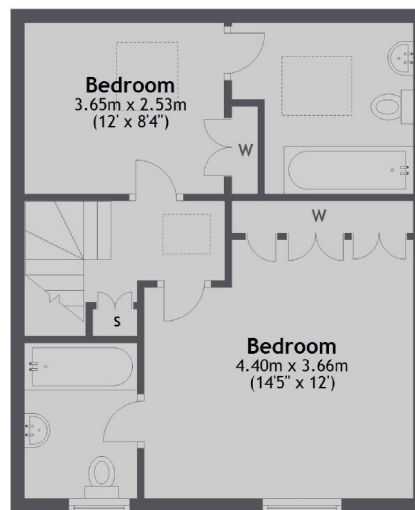
Ground Floor



First Floor



Second Floor



Total area: approx. 121.7 sq. metres (1309.5 sq. feet)