



Hunt Close, W11

£825 Per week

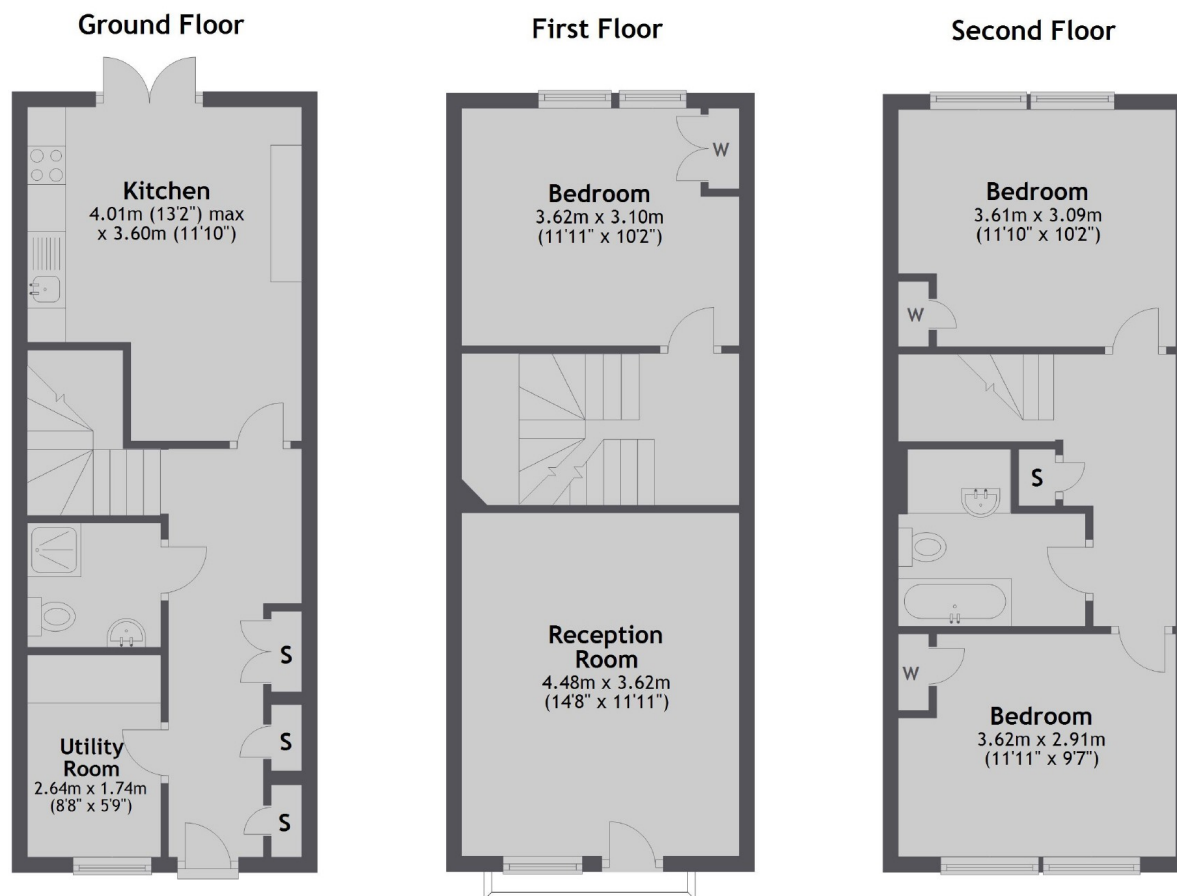
This three bedroom town house is arranged over three floors with a large eat-in kitchen with direct access onto the private patio garden, three double bedrooms, modern family bathroom and additional shower room. Available for families and sharers

The property is close to Holland Park Station (Central Line), Shepherds Bush Station (Central Line/London Overground) and Westfield Shopping centre.

Features

- Available for families and sharers
- Three Double Bedrooms
- Private Patio Garden
- Wooden Flooring
- Three Storey House
- Large Kitchen
- Plenty Of Storage

Hunt Close, London, W11



Total area: approx. 104.8 sq. metres (1127.6 sq. feet)