



Shrewsbury Mews, W2

£692 Per week

Dexters



Shrewsbury Mews, W2

This brand newly refurbished property is arranged over two floors with two double bedrooms with built in storage and a large living room with a semi open plan kitchen.

This house is ideally located close to the restaurants and shops at Westbourne Grove, including Granger & Co, 202 and Bodyism.

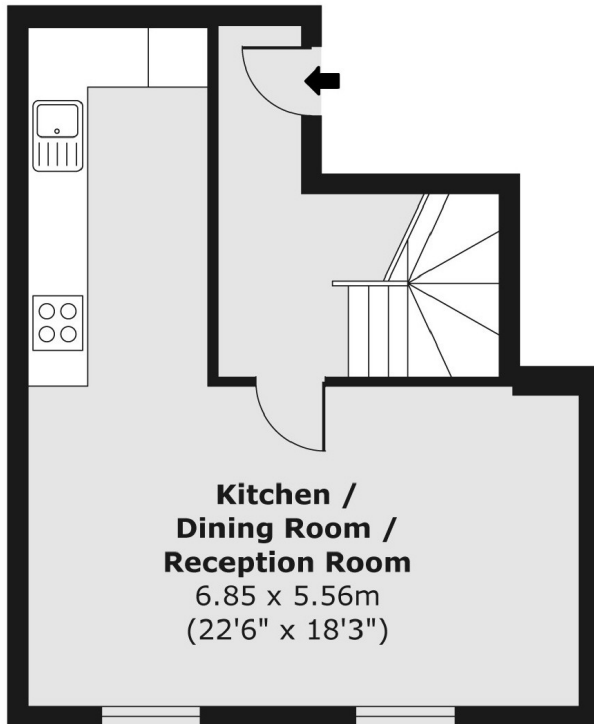
Features

- Two Double Bedrooms
- Newly Refurbished
- Split Level
- Wood Flooring
- Plenty Of Storage
- Semi Open Plan Kitchen

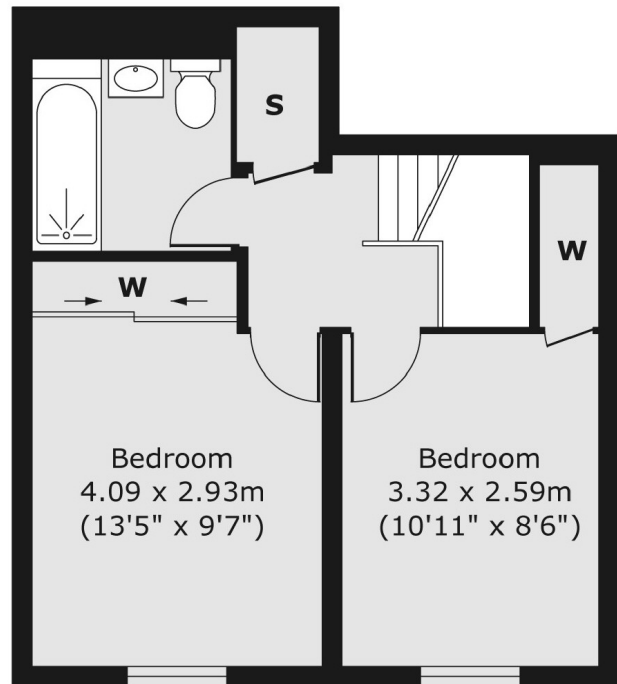


Shrewsbury Mews, London, W2

First Floor



Second Floor



Total Area (approx.): 64.32 sq. m (692 sq. ft)

Garage Area (approx.): 16.17 sq. m (174 sq. ft)