



Artesian Road, W2

£1,038 Per week

A spacious two bedroom two bathroom split level property benefiting from an open plan kitchen living space with wooden flooring, high ceilings, built in storage and a private balcony.

The Westbourne Development is ideally located within the heart of Notting Hill with the local shops and restaurants of Westbourne Grove and Portobello Road on the doorstep.

Features

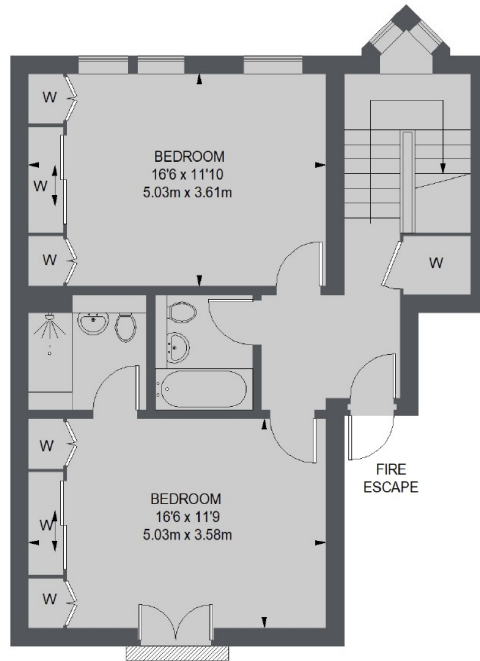
- Two Double Bedrooms
- Spacious Reception
- Wood Flooring
- High Ceilings
- Built In Storage
- Private Balcony
- Gated Development



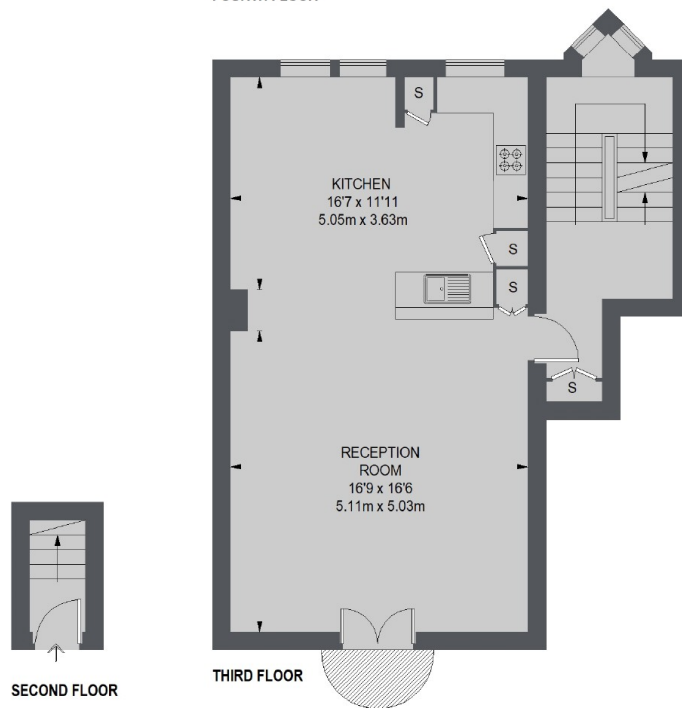
Artesian Road, W2



Artesian Road, London, W2



FOURTH FLOOR



SECOND FLOOR

THIRD FLOOR

TOTAL APPROX. FLOOR AREA 1306 SQ. FT. (121.32 SQ. M.)