



Holland Park Avenue, W11

£900 Per week

Dexters



Holland Park Avenue, W11

This attractive two bedroom apartment has a private south facing garden-patio overlooking the Holland Park tennis club.

Holland Park Avenue is perfectly located for close access to the shops and restaurants of Notting Hill Gate as well as the green spaces of Holland Park and Hyde Park.

Features

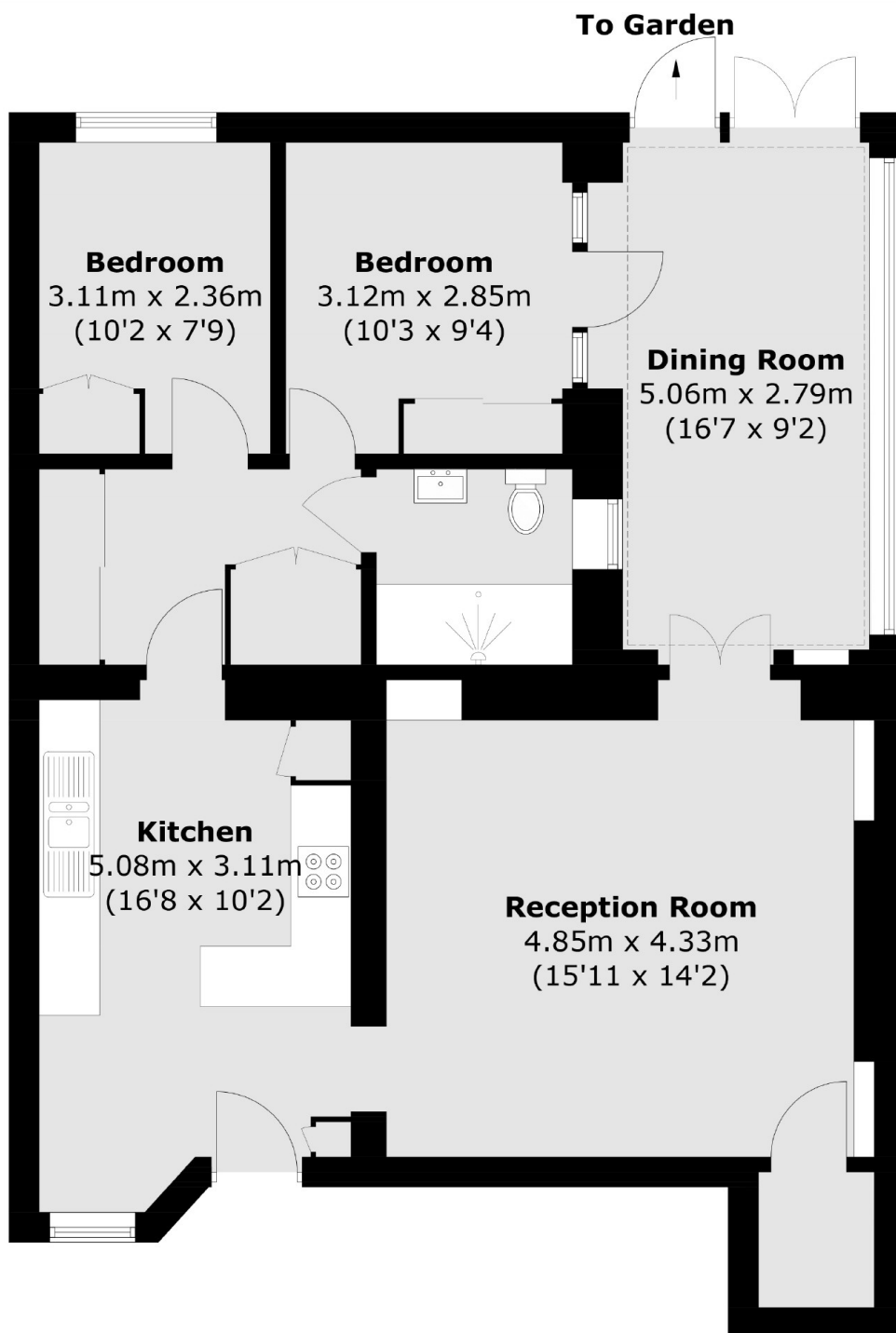
- Two Double Bedroom
- Private Garden
- Separate Kitchen
- Holland Park
- Excellent Condition







Holland Park Avenue, London, W11



Total area (approx.): 86.2 sq. m (927.8 sq. ft)