



Tavistock Crescent, W11

£415 Per week

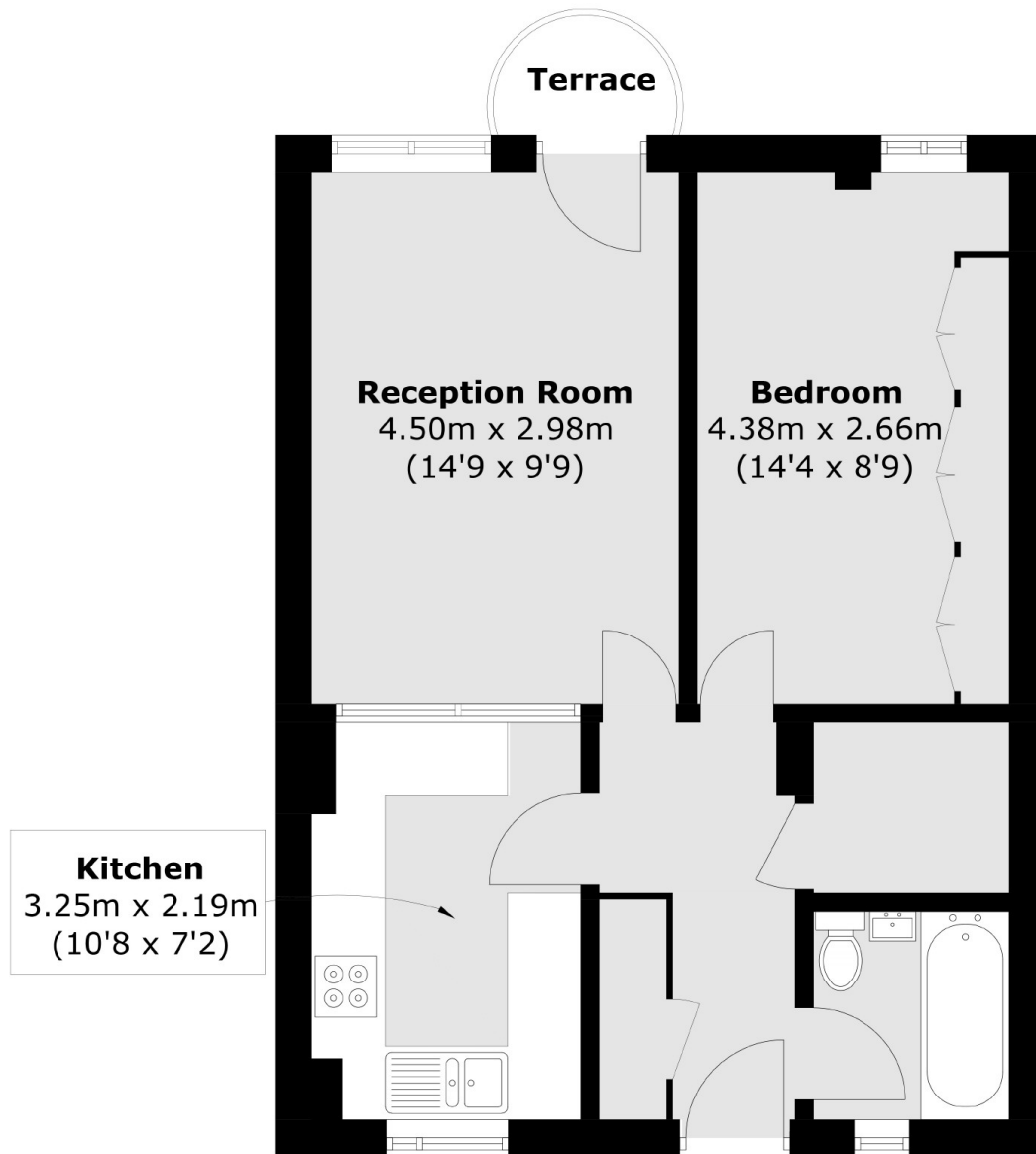
A well presented one bedroom apartment situated on the first floor of this purpose built block consisting of a large bright reception with a balcony, a separate fitted kitchen with washer dryer, a double bedroom with fitted wardrobes.

Ideally located for both Westbourne Park (Circle & Hammersmith & City Lines) & Ladbroke Grove (Hammersmith & City Line (underground stations and the bars & cafes of Portobello Road.

Features

- One Bedroom Apartment
- Profesionally Managed
- Bright Outlook
- Balcony
- Peaceful Residential Location
- First Floor
- Purpose Built Block
- Built-in Wardrobes
- Ladbroke Grove

Tavistock Crescent, London, W11



Total area (approx.): 44.4sq. m (477.9 sq. ft)
Terrace: 1.2 sq. m (13.0 sq. ft)