



## Chepstow Road, W2

£495 Per week

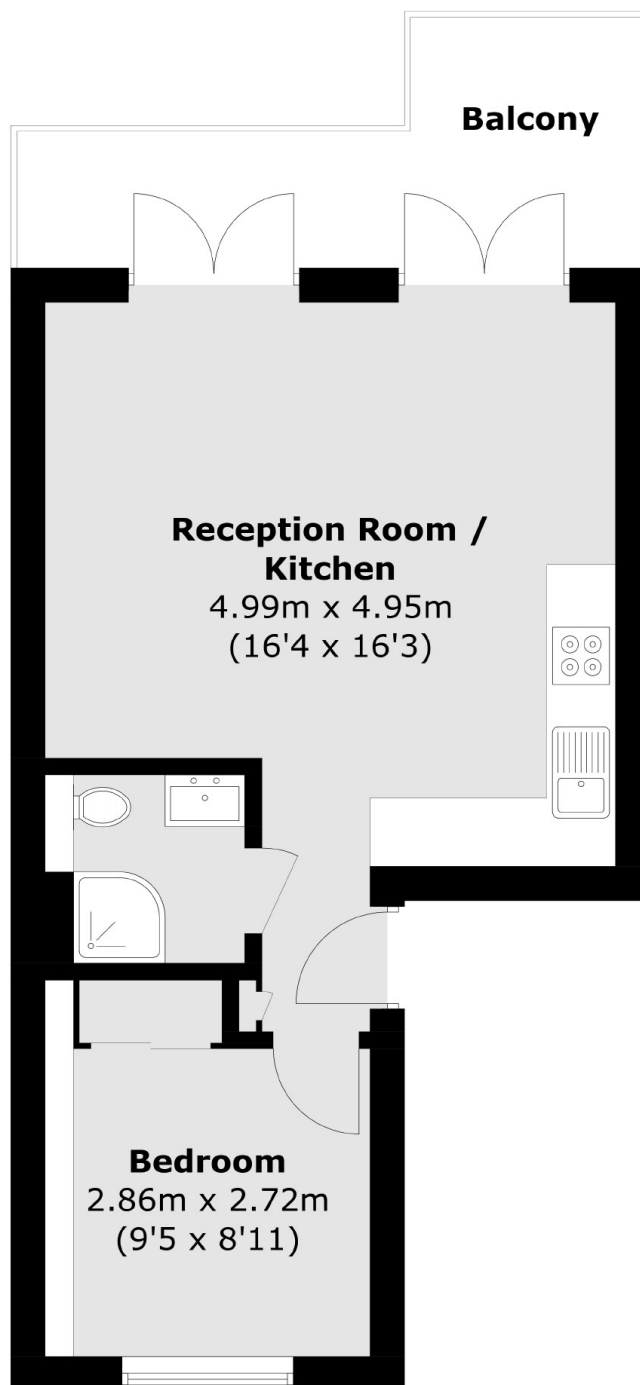
A large and modern one bedroom apartment situated on the first floor of a well maintained period conversion with an open plan kitchen reception and wood flooring throughout.

Ideally situated within close proximity to Notting Hill Gate underground station, Portobello Road Market, Hyde Park and Paddington.

### Features

- First Floor Flat
- One Double Bedroom
- Fitted Wardrobes
- Open Plan Kitchen
- Wood Flooring
- High Ceilings

Chepstow Road,  
London, W2



Total area (approx.): 37.6 sq. m (404.7 sq. ft)  
Balcony: 8.6 sq. m (92.6 sq. ft)

**Dexters**

Notting Hill  
121-123 Notting Hill Gate  
London  
W11 3LB  
Lettings  
020 7792 0792

Energy Rating: C. We aim to make our particulars both accurate and reliable. However they are not guaranteed; nor do they form part of an offer or contract. If you require clarification on any points then please contact us, especially if you're traveling some distance to view. Please note that appliances and heating systems have not been tested and therefore no warranties can be given as to their good working order.

 **RICS** | Regulated  
Estate Agent  
and Letting Agent

dexters.co.uk