



Tavistock Crescent, W11

£450 Per week

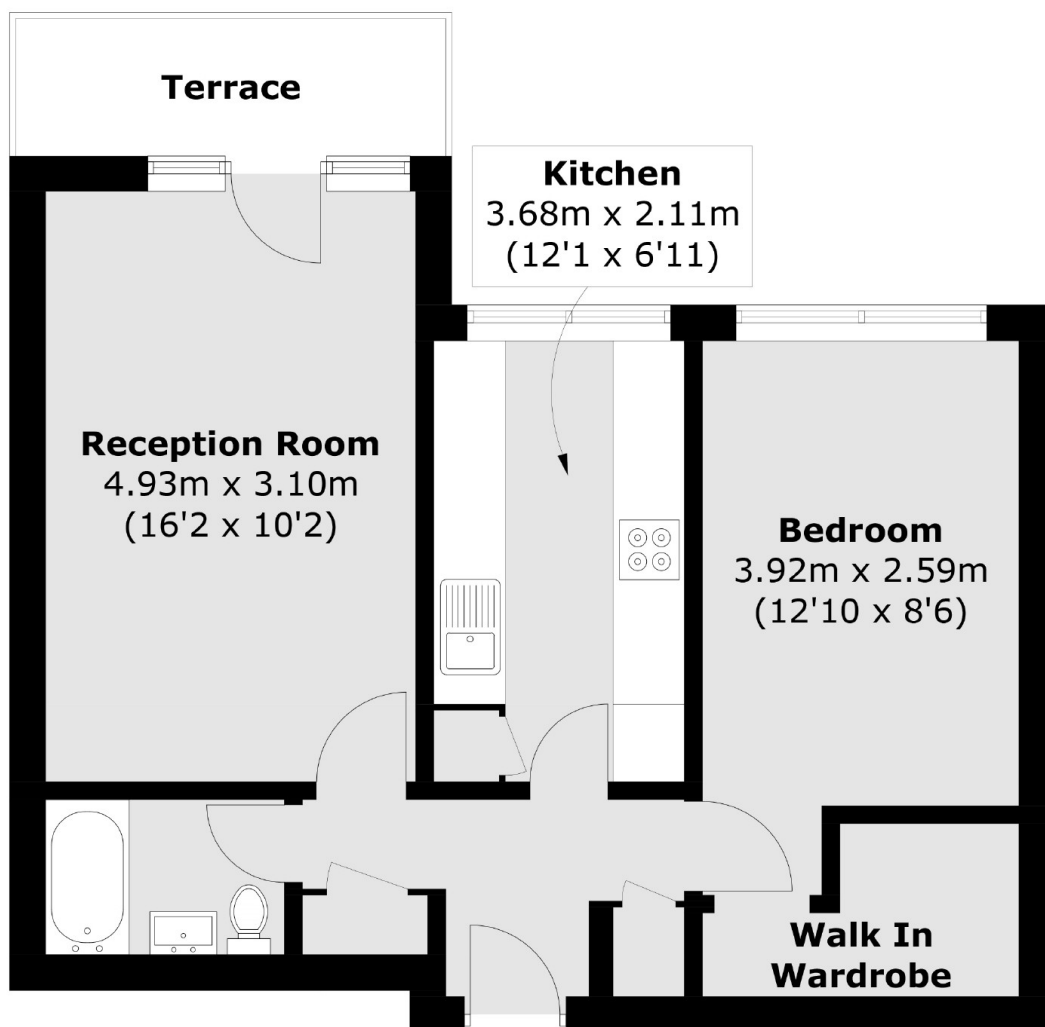
A well-maintained, larger than average one bedroom property in the heart of Notting Hill. It features from a modern kitchen and bathroom, wooden flooring throughout and ample storage. It also has a private balcony off of the living room and separate kitchen.

Tavistock Crescent is well located for the many local amenities of both Portobello Road and Westbourne Grove with their eclectic mix of shopping, eateries & bars. The nearest Underground station is Westbourne Park (Hammersmith & City line and Circle lines).

Features

- One bedroom
- Spacious
- Balcony
- Separate Kitchen
- Wooden Flooring
- Modern Finish

Tavistock Crescent, London, W11



Total area (approx.): 47.8 sq. m (514.5.0 sq. ft)
Terrace area (approx.): 3.4 sq. m (36.6 sq. ft)

Dexters

Notting Hill
121-123 Notting Hill Gate
London
W11 3LB
Lettings
020 7792 0792

Energy Rating: - We aim to make our particulars both accurate and reliable. However they are not guaranteed; nor do they form part of an offer or contract. If you require clarification on any points then please contact us, especially if you're traveling some distance to view. Please note that appliances and heating systems have not been tested and therefore no warranties can be given as to their good working order.

 **RICS** | Regulated
Estate Agent
and Letting Agent

dexters.co.uk