



Victoria Mews, W11

£7,000 Per week

Dexters



Victoria Mews, W11

An immaculately presented five double bedroom mews house that was recently refurbished to exacting standards throughout. Benefits include; Five en-suite bathrooms, secure underground parking, two receptions, underfloor heating and air conditioning.

Victoria Mews is an peaceful and exclusive residential address ideally positioned just off Ladbroke Road, conveniently located 0.1 miles from Notting Hill Gate Tube station.

Features

Five Double Bedrooms
Five Ensuite Bathrooms
Two Reception Rooms

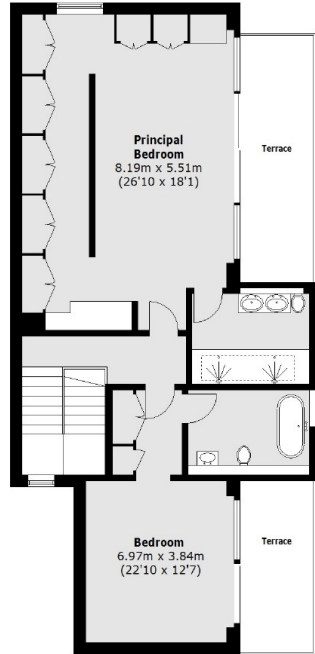
Air Conditioned



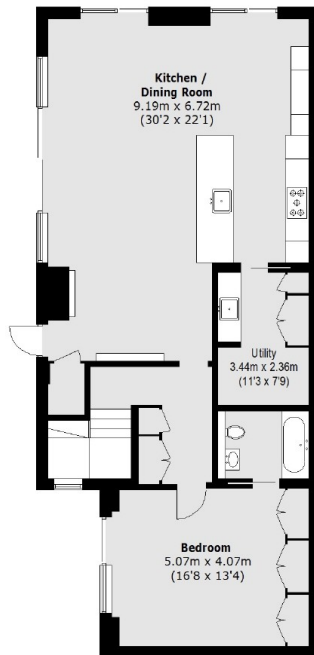




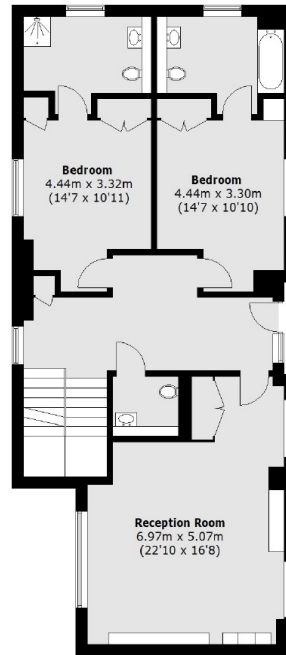
Victoria Mews, London, W11



First Floor



Lower Ground Floor



Ground Floor

Total area (approx.): 298.3 sq. m (3,210.8 Sq. ft)
Terraces : 20.7 sq. m (222.8 Sq. ft)

Dexters

Notting Hill
121-123 Notting Hill Gate
London
W11 3LB

Lettings
020 7792 0792

Energy Rating: . We aim to make our particulars both accurate and reliable. However they are not guaranteed; nor do they form part of an offer or contract. If you require clarification on any points then please contact us, especially if you're traveling some distance to view. Please note that appliances and heating systems have not been tested and therefore no warranties can be given as to their good working order.

 **RICS** | Regulated
Estate Agent
and Letting Agent

dexters.co.uk