



Kensington Gardens Square, W2

£8,500

Dexters



## Kensington Gardens Square, London, W2

An incredibly presented three double bedroom penthouse apartment spanning more than 2500 square feet of luxurious living space and benefitting from beautiful unrestricted views of London skyline.

The penthouse apartment is situated within a prestigious new building benefiting from 24 hour security and an elevator that leads directly in to the residence. Secure underground parking is also available.

Kensington Gardens Square is a popular residential location that is ideally located just moments from the local shops and restaurants of Notting Hill. The local Tube Stations of Bayswater and Queensway are located 0.2 miles from the property.

### Features

- Stunning Penthouse Apartment
- 2500 square feet
- 24 hour security
- Underground parking
- Roof Terrace

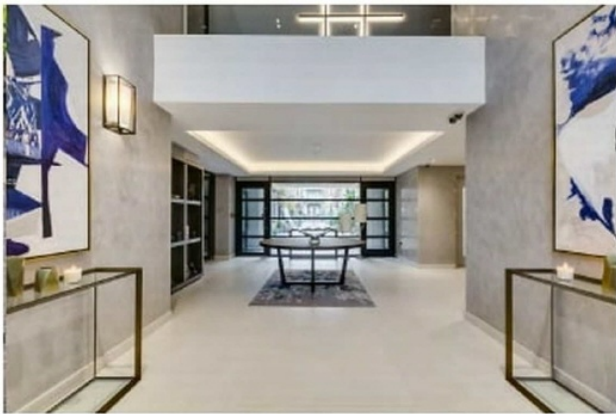








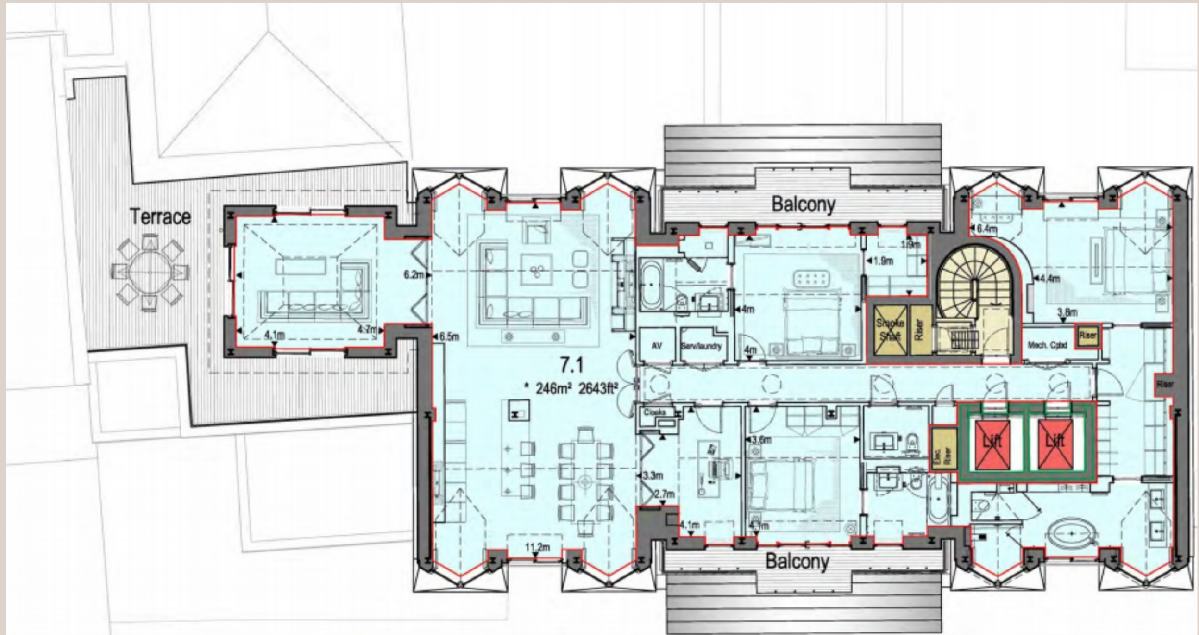




# Kensington Gardens Square, London, W2

59 KENSINGTON GARDENS SQUARE

THE PENTHOUSE FLOORPLAN



## THE PENTHOUSE

3 bedroom apartment

7.1

Total Area	236sq'	2540ft²
Kitchen / Living Room	4.5m x 10.9m	21'3" x 35'9"
Master Bedroom	4.5m x 3.8m	20'4" x 12'5"
Bedroom 2	5.8m x 3.9m	19'10" x 12'9"
Bedroom 3	3.2m x 4m	12'1" x 13'1"
Study	3.3m x 4m	10'9" x 13'1"



Key:  
W - Wardrobe • AC - Airing Cupboard  
WM - Washing Machine • S - Storage

Floorplan shown are for approximate measurements only. Exact heights and sizes may vary. All measurements may vary within a tolerance of 5%. The dimensions are not intended to be used for carpet size, appliance size or items of furniture.

- 56 -

- 57 -

**Dexters**

Notting Hill  
121-123 Notting Hill Gate,  
Notting Hill, London, W11 3LB

Sales  
020 7243 4500

Energy Rating: . We aim to make our particulars both accurate and reliable. However they are not guaranteed; nor do they form part of an offer or contract. If you require clarification on any points then please contact us, especially if you're traveling some distance to view. Please note that appliances and heating systems have not been tested and therefore no warranties can be given as to their good working order.

 **RICS** | Regulated  
Estate Agent  
and Letting Agent

[dexters.co.uk](http://dexters.co.uk)