



Kensington Gardens Square, W2

£1,315 Per week

Dexters



Kensington Gardens Square, W2

A luxury and contemporary two double bedroom, lateral apartment and situated on the sixth floor of this prestigious new development. Ideally located on Kensington Gardens Square, just off Westbourne Grove in Notting Hill.

Miele Appliances, two lifts, Cooling in all zones, 24/7 porter, new build, 7 Minute Walk To Hyde Park, furniture package available at additional cost, underground parking included.

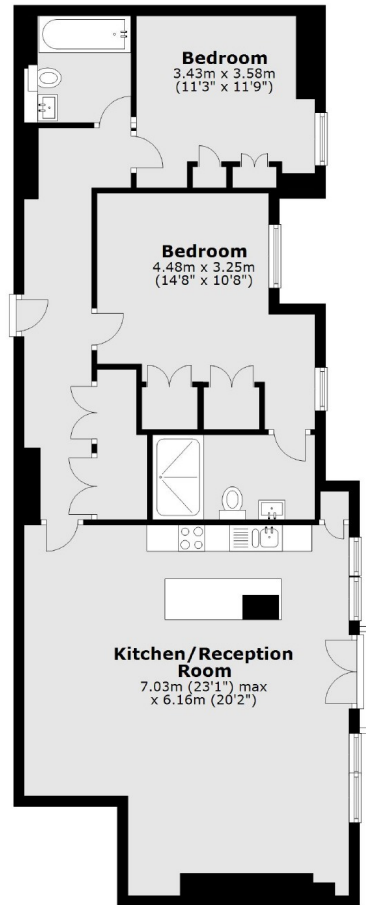
The development is conveniently located a few steps from the local shops and boutiques of Notting Hill. Bayswater Tube Station is 0.2 miles from the property whilst Queensway is 0.3 miles and Notting Hill Gate is 0.7 miles.

Features

- Miele Appliances
- Two lifts
- Cooling in all zones,
- 24/7 porter
- Exclusive new build
- 7 Minute walk To Hyde Park



Kensington Gardens Square, London, W2



Sixth Floor

Total area: approx. 92.0 sq. metres (990.1 sq. feet)