



## Kensington Gardens Square, W2

£2,295 Per week

**Dexters**



## Kensington Gardens Square, W2

This split-level three-bedroom apartment in the popular Kensington Gardens Square boasts views of communal gardens. Ideally situated Notting Hill close to Hyde Park and Westbourne Grove, this property has been extensively remodeled and updated to offer modern luxury living.

Kensington Garden Square is conveniently located a few steps from the local shops and boutiques of Notting Hill. Bayswater Tube Station is 0.2 miles from the property whilst Queensway is 0.3 miles and Notting Hill Gate is 0.7 miles.

### Features

- Three Bedroom
- Air Cooling System
- Newly Refurbished
- Garden Square
- Herringbone Wooden Flooring
- Split over Three Floors





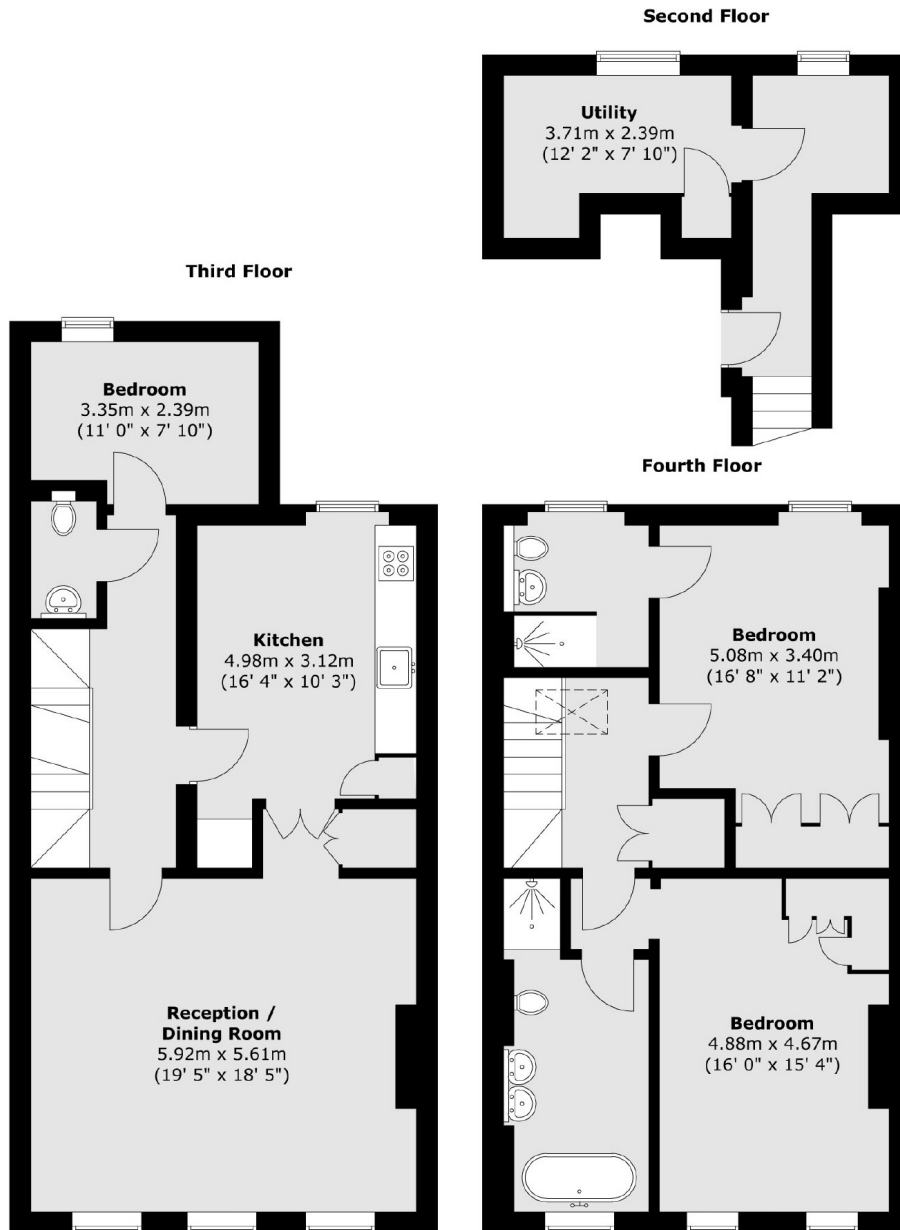








# Kensington Gardens Square, London, W2



Total area (approx.) : 138.7 sq. m (1493 sq. ft)