



Kensington Gardens Square, W2

£1,190 Per week

Dexters



Kensington Gardens Square, W2

A modern and contemporary two double bedroom apartment situated on the second floor of this luxurious new development located on Kensington Garden Square offering secure underground parking and a porter.

The apartment further benefits include modern oak wood flooring throughout, comfort cooling, two double bedrooms complete with built in storage, two bathrooms and a large open plan living space including a modern kitchen complete with Miele appliances.

Kensington Garden Square is conveniently located a few steps from the local shops and boutiques of Notting Hill. Bayswater Tube Station is 0.2 miles from the property whilst Queensway is 0.3 miles and Notting Hill Gate is 0.7 miles.

Features

- Modern two bedroom apartment
- 24 hour porter
- Underground parking
- Two bathrooms
- Wood flooring

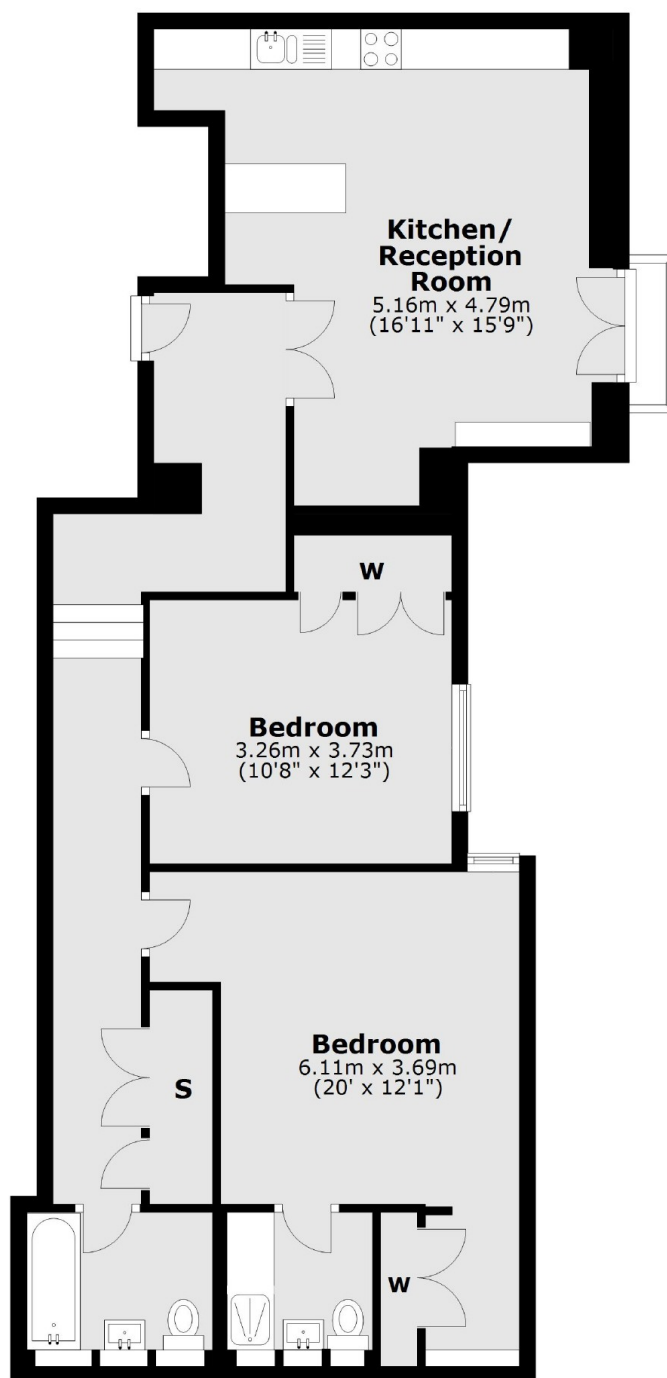






Kensington Gardens Square, London, W2

Second Floor



Total area: approx. 87.1 sq. metres (937.2 sq. feet)