



Princes Mews, W2

£2,500 Per week

**Dexters**



## Princes Mews, W2

A perfectly appointed four double bedroom mews house meticulously refurbished throughout, offering the ultimate in luxurious living whilst being ideally located in the heart of Notting Hill.

Princes Mews is a quiet residential mews ideally located within close proximity of the local shops and restaurants of Westbourne Grove and Notting Hill Gate.

### Features

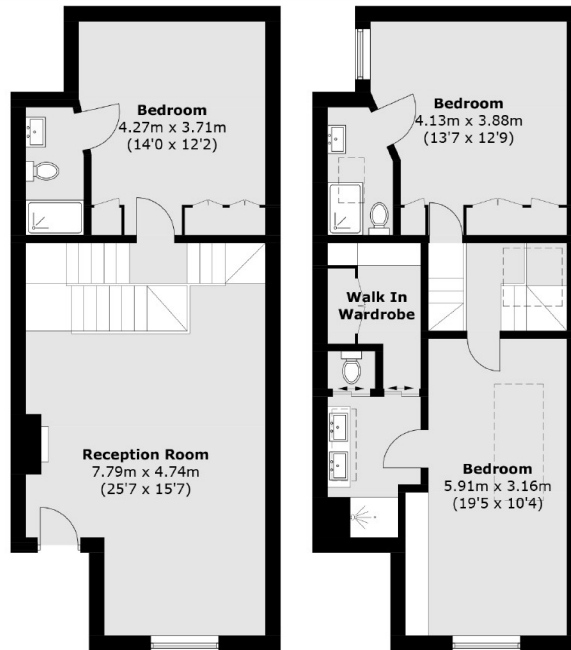
- Private Mews
- Professionally Designed Interior
- Four Double Bedrooms
- Surround Sound
- Four Bathrooms





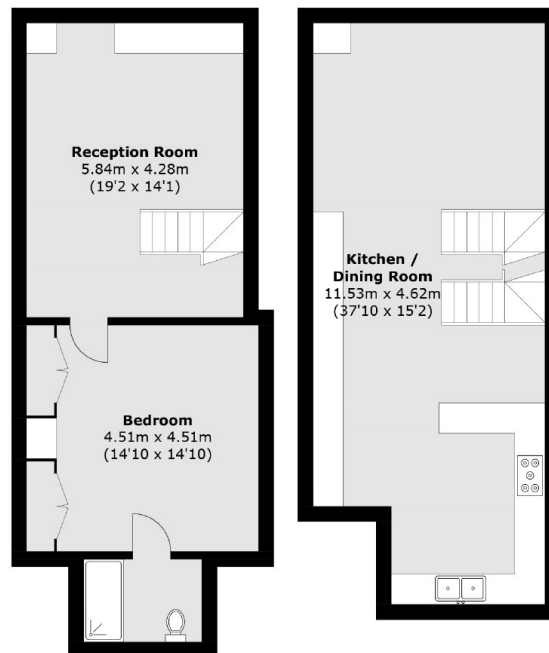


# Princes Mews, London, W2



Ground Floor

First Floor



Basement

Lower Ground Floor

Total area (approx.): 207.6 sq. m (2,234.6 sq. ft)  
(Including Basement)