

Earl's Court Square, SW5

£1,100,000

A magnificent one bedroom apartment on the first floor of a Victorian stucco fronted house with a mezzanine study area and access to award winning communal gardens.

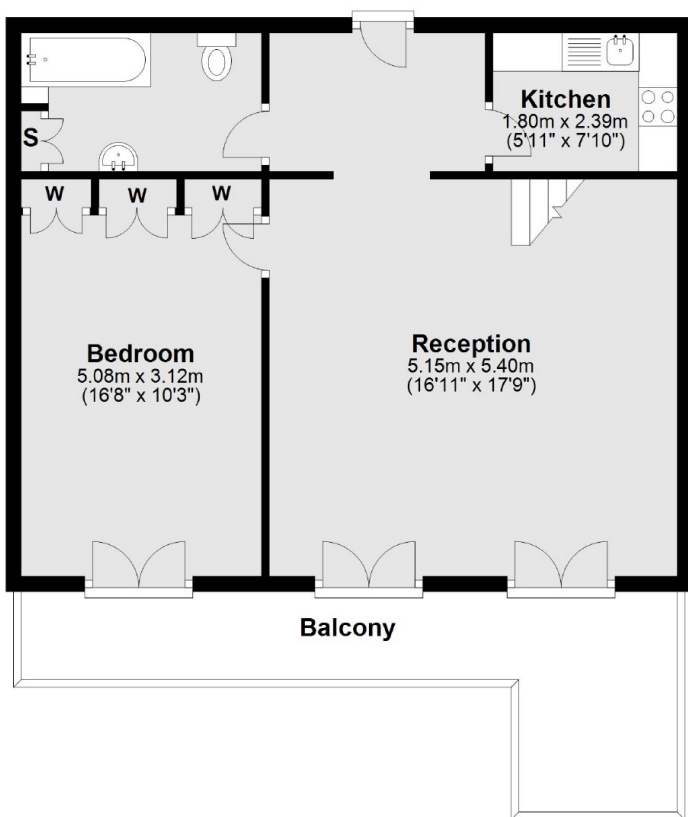
Earl's Court Square is conveniently located between Earl's Court Road and Warwick Road with an array of shops, restaurants and bars within close proximity. The nearest underground station is Earl's Court.

Features

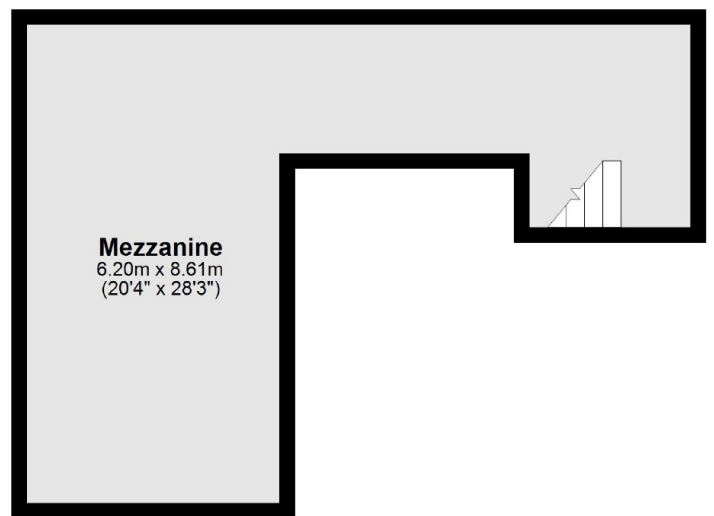
Amazing Ceiling Height
Period Features
Mezzanine
Private Terrace
Separate Kitchen
Communal Gardens

Earl's Court Square, London, SW5

First Floor



Mezzanine



Total area: approx. 90.3 sq. metres (972.5 sq. feet)

Contact

To arrange a viewing call our office on the number below or visit our website.



Energy Rating: D. We aim to make our particulars both accurate and reliable. However they are not guaranteed; nor do they form part of an offer or contract. If you require clarification on any points then please contact us, especially if you're traveling some distance to view. Please note that appliances and heating systems have not been tested and therefore no warranties can be given as to their good working order.