



Walton Street, SW3

£2,500,000

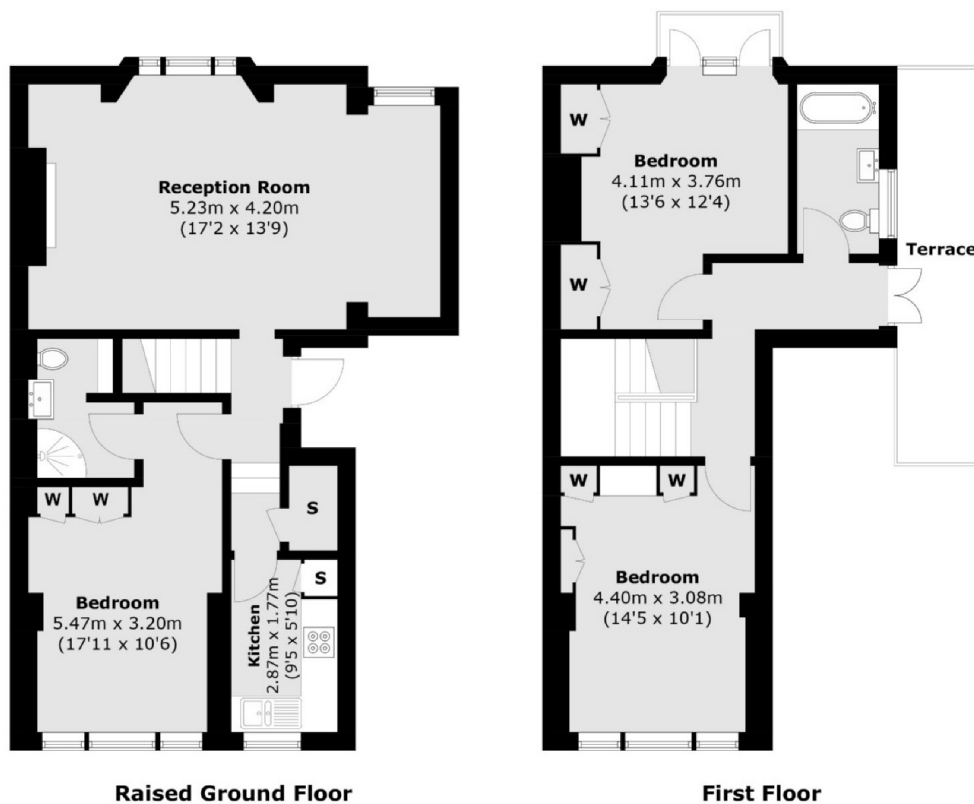
A split level raised ground and first floor maisonette, consisting of three double bedrooms, two bathrooms and a large reception space for living and dining. The property also benefits from having two private terraces.

Walton Street is ideally located between Knightsbridge, Sloane Square and South Kensington stations. Beauchamp Place is near by with all the boutique shops and local amenities on offer.

Features

- Split Level Maisonette
- Immaculate Condition
- Three Double Bedrooms
- Two Bathrooms
- Two Private Terraces
- Share of the Freehold

Walton Street, London, SW3



Total area (approx.): 102 sq. m (1,097.9 sq. ft)
Terrace area : 10.1 sq. m (108.7 sq. ft)

Contact

To arrange a viewing call our office on the number below or visit our website.



Energy Rating: D. We aim to make our particulars both accurate and reliable. However they are not guaranteed; nor do they form part of an offer or contract. If you require clarification on any points then please contact us, especially if you're traveling some distance to view. Please note that appliances and heating systems have not been tested and therefore no warranties can be given as to their good working order.